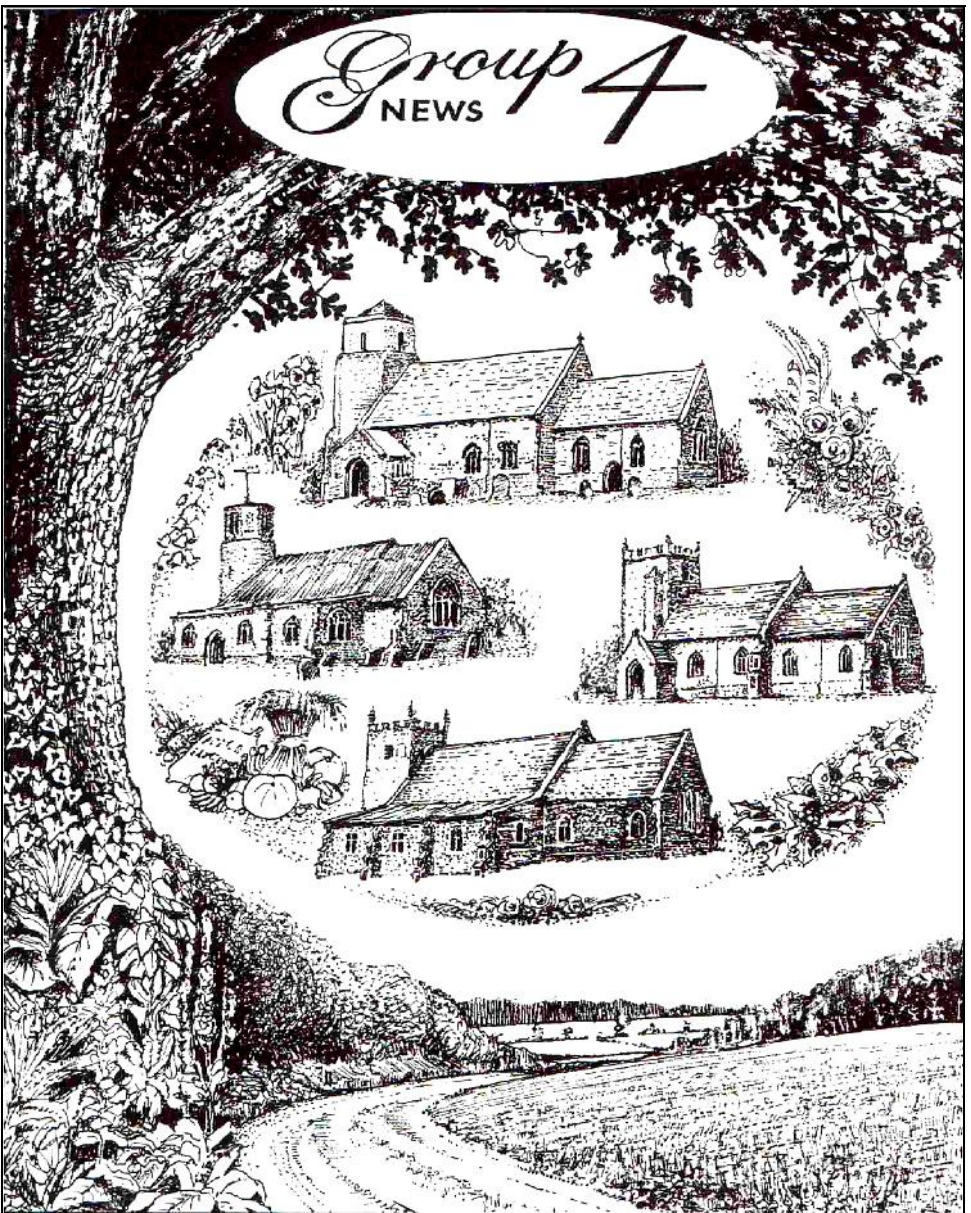


# Group 4

NEWS



The Parishes of Barton Bendish & Eastmoor; Beachamwell, Shingham & Drymere;  
Boughton; Wereham

**April 2024**

Cover illustration drawn by Mark Powell, Beachamwell ©

## WELCOME



Once again we would like to thank

- ◆ Alan Pickering for dealing with the adverts
- ◆ Kevin Fisher for the website
- ◆ Andrew and Liz Stephen for collecting and delivering to the villages.
- ◆ Limetree Printers for their super efficiency.
- ◆ Everyone who has helped with G4N in any way

We do appreciate your continued support.

As always, 'Happy Reading'

The Editorial Team

Eileen and Pam

Thanks to all contributors and apologies to any whose work has not been shown in this issue.

We promise to include your articles wherever and whenever possible. Please do keep them coming.

Many thanks to the distributors, we couldn't do without you!!!

© Copyright Group4 News 2024

## GROUP 4 TEAM VILLAGE CONTACTS

**Barton Bendish:** Jill Mason  
Sandmere, Church Rd, Barton Bendish  
Tel: 01366 347 928  
[masons.sandmere@btinternet.com](mailto:masons.sandmere@btinternet.com)

**Beachamwell:** Eileen Powell  
20 All Saints Way, Beachamwell  
Tel: 01366 328 648  
[powells@beechemwell.plus.com](mailto:powells@beechemwell.plus.com)

**Boughton:** Pam Wakeling  
Robet, Mill Hill Road, Boughton  
Tel: 01366 500 429  
[p.wakeling621@btinternet.com](mailto:p.wakeling621@btinternet.com)

**Wereham:** Viv Scott  
Orchard House, Flegg Green, Wereham  
Tel: 01366 500346  
[vivienne.scott@googlemail.com](mailto:vivienne.scott@googlemail.com)

Please submit all information through your Village Contacts.

**Deadline for copy for the  
May 24 edition:**

**11th April**

### ADVERTISING

Alan Pickering 16 Tinkers Way,  
Downham Market, PE38 9TQ

Tel: 07779 787499 or 01366 386125  
e:mail: [group4news@gmail.com](mailto:group4news@gmail.com)

If you use any of the advertisers in the magazine, please mention where you have seen their advertisement.

### WEBSITE

[www.group4news.co.uk](http://www.group4news.co.uk)

Kevin Fisher, Tel 01366 502224

## LIGHTEN OUR DARKNESS

With the passing of the Spring Equinox on the 20<sup>th</sup> March the days are lengthening; what are often referred to as 'light evenings'. With that the signs of spring seem to increase with daffodils and other plants flowering and also birdsong becoming more evident. Understandably, many of us enjoy this time of year more than any other. We do appear to favourably respond to the increase in the amount of natural light. That despite the profusion of the artificial sort. However, are we leaving darkness behind altogether? After all, one of our primeval instincts is to sleep during the hours of darkness. With which artificial light and 24-hour media do compete.

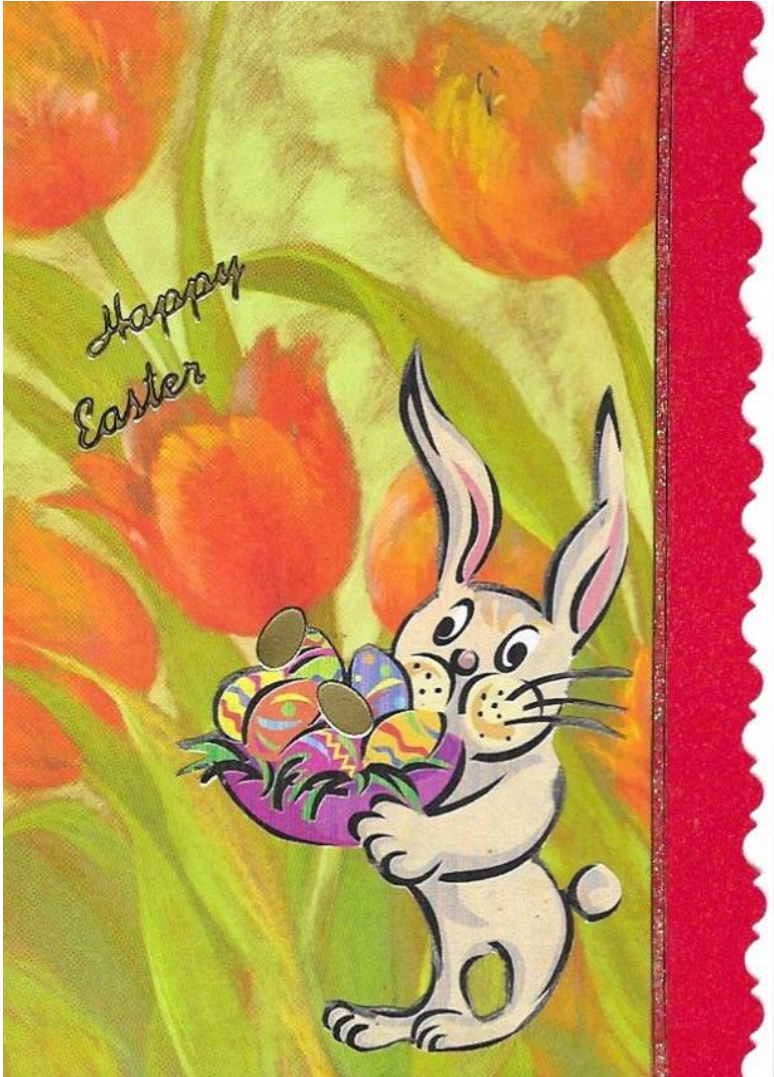
Darkness and light are used metaphorically to represent evil and goodness. The latter being referred to in the Bible as *righteousness*. As with the competition between artificial light, 24-hour media are our sleep patterns, there is also a competition between our propensities to being bad or good. Again, these appear to be instinctive in character. Although there is always a debate about nature and nurture. In other words whether our behaviours are indeed instinctive or has been learned. The former giving credence to the doctrine of original sin. This being derived from Adam and Eve's disobedience to God in the Garden of Eden.

We may not be aware of this competition at all times. Some may feel it more acutely than others whilst some may even dismiss it or choose to ignore it. But, like it or not, it is there. The majority are not drawn to extremes, of course, we may not be particularly saintly nor yet have criminal intentions. Even so, there is a potential for a battle to take place within us. Perhaps the classic temptation comes when we are driving. That of exceeding the speed limit. At the time you may not even be aware that you are doing so. On the other hand, there is a powerful feeling of having got away with something when you deliberately break the law. I wonder if that is how Adam and Eve felt?

If we are tempted to do something wrong or even exceed to that temptation, how are we to come to terms with that we have done wrong? It would, fairly obviously, be remiss of me not to mention confession. Do we confess to someone else? If so, we need to be certain that it would not cause more harm than good. Many people rely on therapists and, in the right circumstances, such help and support can be invaluable. Christians make their confessions to God. This may be in the form of a Sacramental Confession before a priest as practiced in the Roman Catholic Church. In other denominations it is principally in the form of the General Confession which is part of the liturgy within a Service.

## LIGHTEN OUR DARKNESS

In the fourth Gospel St. John makes ample use of the metaphors of light and darkness. In chapter 12 Jesus says, “*Walk while you have the Light, so that the darkness may not overcome you*” Let us not become enveloped the darkness of sin; let us put it behind us. Rather walk in the Light of Christ. Our life is in that Light for ‘*Life is eternal and Love is immortal*’. **Tony Mills**



## RECIPE OF THE MONTH

### Easter Biscuits

4oz margarine  
4oz sugar  
1 small egg  
8oz plain flour  
1tsp grated lemon rind  
1/4 tsp cinnamon or mixed spice  
2oz currants  
A little milk



- Cream margarine and sugar together, add beaten egg, flour and rest of ingredients and mix to a stiff dough.
- Roll out 1/4" thick and cut into 4" rounds. Brush with egg white and dredge with sugar (optional)
- Bake until golden brown in a moderate oven.

### Simnel Cake

1 6" rich fruit cake - bought or made  
1/2 lb marzipan - bought or made

- Cut off 1/3 marzipan and roll out into a round slightly less than the diameter of the cake.
- Cut the cake across the centre and place the marzipan between the two pieces.
- Using half the remaining marzipan, roll out into a round and cover the top of the cake.
- Using the other half of marzipan make 12 small balls—they represent the apostles. Place them evenly around the top edge of the cake. Brush these over with a little egg wash.
- Put into a hot oven until the balls are browned. When cool, pour glaze icing into the centre and decorate with chicks, chocolate eggs etc.



***Eileen Powell***

## COUNTRYSIDE NOTES

For nearly a year previous to February a pair of moorhens were regular visitors to our garden which was surprising in several ways. As with many things that occur in nature which differ from the norm you wonder why. Firstly, moorhens are wetland birds, in other words water, or being close to it, is their natural habitat. The nearest ponds to us are about 300 yards away in opposite directions which is quite a distance for a smallish bird that's not a strong flyer to travel. I don't think they were inhabitants of either. Yes, we have a pond in our garden but they were unable to access it because we keep it covered with weld mesh to protect the fish from herons. Secondly, our garden is enclosed meaning they had to negotiate a 6ft fence or wall to get in. They'd fly up onto it and look to see if the coast was clear before dropping down. They came in several times a day, sometimes together, sometimes singly, to pick about under the bird table or poke about in the flower borders. They were quite shy although they'd stand up to a woodpigeon if it came too close. Then they'd be off to visit neighbouring gardens or even take a stroll a little way down the road. Last summer they had a baby but it didn't last long, I expect the local cats saw to that! I loved seeing them as they are neat and tidy and did no damage. As moorhens are omnivorous they may have even earned their keep by disposing of slugs and snails. Maybe, with so much water laid on the fields in February they found a more convenient place to live.

Moorhens and Coots are similar in appearance the former being about the size of a pigeon and the latter a bit larger, both are very territorial. They share similar habitats in that they inhabit ponds, lakes, streams and rivers with dense vegetation on the banks but can also be seen foraging on nearby grassland. Although quite timid in the wild they become tame when living in public places such as town parks. Both have very large feet with Coots having partially webbed toes. Neither are very strong flyers and taking off from water appears somewhat laborious.

Moorhens have nothing to do with moorland. Their name is derived from 'merehen' or bird of the lakes. Most common and widespread of British water fowl they have black plumage but are easily identified by a white stripe along their flank and red on their beaks which extends up the forehead. They also flick their tail when they walk the underside of which is also white. Coots are predominately black with just a white flash above their beaks and a small white wing bar which only shows in flight. They can be very aggressive but will often gather in large flocks during the winter in such places as the Norfolk Broads and even stretches of the coast if inland waters are frozen.

***Jill Mason (Barton Bendish)***

## PUNS TO PONDER

### **A joke exploiting the different possible meanings of a word or the fact that there are words which sound alike but have different meanings**

- 1) I've just finished reading a book about the world's greatest basement... It was a best cellar.
- 2) It's my first week working at the bicycle factory and they already made me a spokesperson.
- 3) My laptop caught pneumonia, apparently, because I left Windows open.
- 4) I thought swimming with Dolphins was expensive until I went swimming with sharks... It cost me an arm and a leg.
- 5) The main function of your big toe is to make sure all the furniture in the house is in the right place.
- 6) Horses have lower divorce rates. It's because they are in stable relationships.
- 7) It's pretty obvious that if I run in front of a car, I will get tired, but if I run behind a car I will get exhausted.
- 8) My teachers told me I'd never amount to much because I procrastinate so much. I told them you just wait.
- 9) 90% of bald people still own a comb; they just can't part with it.
- 10) Every morning I get hit by the same bicycle.. It's a vicious cycle.
- 11) The word "incorrectly" is spelt incorrectly in every dictionary.
- 12) I've been experimenting with breeding racing deer. People have accused me of just trying to make a fast buck.
- 13) The other day I yelled into a colander and I strained my voice.
- 14) I went to a fish restaurant last night and ordered the Octopus.  
The waiter told me it takes 4 hours to cook. "Why", I asked. He said, "It's because it keeps turning the gas off"
- 15) What do you call a row of rabbits hopping backwards? A receding hare line.
- 16) When I was a kid, we played spin the bottle with the girls. If they didn't want to kiss you, they would have to give you a dollar. By the time I was 12, I owned my own home.
- 17) Always trust a nudist, they have nothing to hide.

# PICTURE FOR YOU TO COLOUR





## QUIZ PAGE

1. How many bones are there in the human face - 4, 14, 24 or 34?
2. What was John Lennon's middle name?
3. Boris Spassky is a famous name in which sport?
4. When a surgeon performs a myectomy what is removed?
5. Which member of the Royal Family's Christian names include Elizabeth, Alice, Louise?
6. Which boy's name appears in most nursery rhymes?
- 7 According to the proverb, what can't you do if you don't speculate?
8. Zemmiphobia, equinophobia and bufonophobia are phobias relating to what?
9. Which is the longest book in the Bible - Joshua, Proverbs, Leviticus or Psalms?
10. MacKechnies Stores features in which popular TV drama?
11. Where did the catchphrase 'Are you sitting comfortably' originate?
12. 'Pure & Simple' was the number one debut single of which pop band?
13. How many bathrooms are there in Buckingham Palace - 28, 48, 78 or 108?
14. Ceilidh is the Gaelic word for what - dance, dream, entertainment or visit?
15. In Star Trek what is Captain James T. Kirk's middle name?
16. Which 1960's singer named his daughter Tulip after the song that made him famous?
17. Solve the following clues to flowers a) vulpine attire b) partygoer without partner c) Remembrance Day flower d) fragrant Prince.
18. Which district was designated as Britain's first National Park?
19. What is the 49th state of America?
20. What is the ideo locator on an outdoor map?
21. How did denim get it's name?
22. What are Rocky and Bull winkle in the children's cartoon?
23. How many US states have a land border with Mexico?
24. Why is it called plaster of Paris?
25. Which actor's name means 'cool breeze over the mountain's' in Hawaiian?

**Answers:** (1) 14; (2) Winston; (3) Chess; (4) Part of a muscle; (5) The Princess Royal; (6) Jack; (7) Accumulate; (8) Animals - the great mole rat, horses and toads; (9) Psalms; (10) Monarch of the Glen; (11) In the Radio programme 'Listen with Mother'; (12) Hear'Say; (13) 78; (14) Visit; (15) Tiberius; (16) Tiny Tim [the song was 'Tiptoe through the Tulips']; (17) a - foxglove, b - wallflower, c - poppy, d - sweet william; (18) The Peak District in 1951; (19) Alaska - admitted in 1959; (20) The 'you are here' arrow; (21) It is derived from serge-de Nimes, a fabric made in Nimes, France; (22) A squirrel and a moose; (23) Four - Arizona, New Mexico, California and Texas; (24) It was mined at gypsum quarries in Montmartre, Paris; (25) Keanu Reeves

# Barton Bendish Community Library and Second Hand Bookshop



Open every day 10am – 4pm  
St Andrew's Church  
PE33 9GF

Everyone, including people from  
surrounding villages, welcome to  
borrow or buy books

# Beachamwell

24 Public Rights of Way? Where are  
they?

Come and explore with the  
**Wednesday Walkers**

On the first Wednesday each month,  
leaving the Memorial Hall at 10.00 a.m.

*All welcome*

*dogs on leads please*



**Enquiries:**  
**01366**  
**328960**

# Beachamwell



**St. Mary's  
Church**

**Short Service of  
Worship on the Green**

**[If wet in the Village Hall]**

**Saturday 13<sup>0h</sup> April  
11.00am**

*Do come and join us.*

Enquiries 01366 328 779

# Beachamwell



**St. Mary's  
Church /  
Village Hall**

**Light Lunches**

**Saturday 13<sup>0h</sup> April  
12 noon — 2.00**

Money raised will go to funds  
for continuing restoration work

Enquiries 01366 328 779

## Beachamwell



### Afternoon Tea and a Chat.....'

**Wednesday  
April 17th  
2 - 4pm  
Village Hall**

Enquiries: 01366 328108

## Barton Bendish Community Breakfast



**Saturday 20th April 9.30  
Barton Bendish Village Hall**

Join us for an informal gathering over breakfast with friends to discuss thoughts prompted by faith & spirituality, to motivate and inspire us.

*Enquiries 01347 849 or 01347 563  
Donations for St Andrews Church*

## Barton Bendish Film Club

Proudly Presents:

### 'Wonka'

**Saturday 20th April  
6.30 [D/O] For 7.00pm [S]  
Barton Bendish Village Hall  
Tickets £5  
Free refreshments during interval  
included**

To reserve your seat please contact  
Box Office: 01366 347849  
email: [cinemabarton@gmail.com](mailto:cinemabarton@gmail.com)  
[www.bartonbendishfilmclub.btck.co.uk/](http://www.bartonbendishfilmclub.btck.co.uk/)

## Barton Bendish Pop Up Café

**Friday April 26th  
12 noon - 3.00  
Village Hall**  
Drop by for lunch or  
afternoon tea and have a  
chat with friends!  
Everyone welcome, no  
need to book  
All profits will be donated  
to RSPCA

[bartonbendishev-ents@gmail.com](mailto:bartonbendishev-ents@gmail.com)

## Beachamwell



### Pop Up Pub

Friday 26th April

7.00pm until  
Last orders 10.30

Village Hall

Enquiries: 07818 453 323

## Barton Bendish



### Quiz & Supper Night

Saturday 27th April 7.00pm  
Village Hall

Teams of up to 6  
£10 per person including  
jacket potato (various fillings)  
with side salad, tea or coffee  
(bring your own drinks)

Bookings:

[bartonbendishevents@gmail.com](mailto:bartonbendishevents@gmail.com)

01366347563 or 01366 347983

Proceeds in aid of St Andrew's  
Church

**BEHIND EVERY ANGRY  
WOMAN, STANDS A  
MAN WHO HAS  
ABSOLUTELY  
NO IDEA WHAT  
HE DID WRONG!**

## POETRY

### A COUPLE OF POEMS BY ANDREW STEPHEN

#### **That's Bleak**

Onion wrapped  
And mapped like a palm  
My mind is cast like a net  
Wide like a Norfolk sky  
Black like the Earth  
And blown with portents  
And pasts born like leaves.  
Among the stone porches' drip  
And stump which singing sits  
Beneath the rainbow smile  
And splits the sky's  
Limits of horizon  
And lowering cloud.  
We wait and wonder  
As the fierce winds  
Tear our loves to pieces.

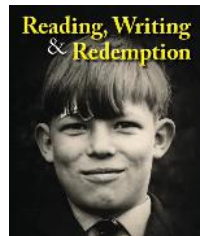
Foggy and grey  
Fresh and vital  
The Sun's motion  
Frames the frozen fields.  
Ice and furrow slope  
Dimly remembering  
As we peer into the past  
And find ourselves  
Right here  
**Andrew Stephen**

#### **Shapes in the Shadows**

All those years  
I was waiting for the door to slam  
Shut on lonely dreams.  
The silence which once filled my head  
Is groping towards words to still the  
ache  
Of endless energy  
And restless searching  
For meaning  
And something more  
Than mere memory  
Which burns on  
Like a solitary bulb  
Revealing only part  
Of our separateness

We imagine our irrelevance  
Hide in the fog  
And noise  
Of uncertainty,  
Not sure about promises made  
Pictures seen  
Or words which  
Expose us.

Sad whistles  
Echo outside.  
The slow moving river  
Is whipped by the wind.  
Cold feet tramp  
Along wet pavements  
As we are called to consciousness.  
Each moment is precious  
Each hurt worthwhile  
Your spirit hangs still in the air  
Your promises have brought me life  
**Andrew Stephen**



# BARTON BENDISH & EASTMOOR VILLAGE NEWS

## Maureen Buck-80 Not Out

“I’ve learned that people will forget what you said, people will forget what you did, but people will never forget how you made them feel.”

Maya Angelou.

It’s hard to imagine how anyone could be more respected than Maureen by the



community she lives in. It was a great joy to us all to have the opportunity to celebrate the beginning of her ninth decade in our wonderful Village Hall. It was no surprise that a small army of people turned up to set up tables, chairs and bunting or that they waited to clear up at the end. Everyone wanted the occasion to be a memorable one — and it was. Maureen has been part of the village all her life, one way or another. She was married in St Andrew’s Church and lives in the

house where she grew up as a child. Her guests included people she has known all her life and some like me who were lucky enough to get to know her after moving to Barton Bendish. As I said during the Toast, she and Val Mcallister did their level best to keep me on the straight and narrow, advising me that the ways of West Norfolk are a little different to those of the big city. Indeed, Maureen is still doing it. The occasion was marked by smiles and laughter and a tribute by Brian Reynolds which through some light on her work at the Hall. She was clearly a worker of miracles. The catering was superb and a performance from the Barton Bendish Choir very impressive, as it always is. I was relieved that having started to sing Happy Birthday, they all joined in and quickly drowned out my discordant notes. Community in action. I know that Maureen was delighted with the way that it went and what a pleasure it was to see our community come together to celebrate with a lady who is an example to us all. I have never heard her say a bad word about anyone. She is kind and willing to accept people as they are. She is an example to us all.

**Andrew Stephen**

# BARTON BENDISH & EASTMOOR VILLAGE NEWS

## **The Community Hub**

We will be running the Hot Hub on Wednesday afternoons until the end of April and intend to continue into May and June on a Tuesday afternoon, in order to avoid clashes with Beachamwell and other events. I have applied for a new grant to support this. If I am not successful, we will perhaps have to think again. We are renaming the Hub as the Community Hub because its function is to support the whole community rather than provide a warm space in response to the cost of living crisis. I know that one lady was put off attending the Hot Hub because she thought she would have to wear a swimming costume. Not so. The Hub is for everyone who likes to meet, talk, drink tea, eat cake and enjoy company. It is also for those who knit, sew, embroider, create tapestry, paint- or indulge in any Art or Craft. I am very grateful to Linda Webster for leading this particular initiative which has certainly attracted people who didn't come before.

The trick now is to encourage everyone to realise that the hub really is for everyone. They are drop in sessions, they are free and many people enjoy coming. Please spread the word. I am enormously grateful to the Village Hall Trustees for their help and encouragement, as I am to Liz Stephen and Maureen Buck for the endless hours they put in. If we are able to make the Community Hub more or less permanent, we will need some more volunteers. I believe the sessions do a lot of good and it is in everyone's interest to make them as popular and successful as possible. We are always happy to receive suggestions about activities to try. We are hoping to organise more help with technology and we are open to other ideas which could benefit the community. Let us know if you have any. This is a remarkable community. It is flourishing. Let's build on that. **Andrew Stephen**

## **Forthcoming Events**

Candle Lit Celtic Service April 7<sup>th</sup> at 6pm St Andrew's Church

Annual Parochial Church Meeting – April 17<sup>th</sup> 7.00pm in St Andrew's Church

Barton Bendish Film Club: We plan to show The Great Escaper on Saturday 1st June, starring Michael Caine and Glenda Jackson.

Barton Bendish Village Open Gardens this year takes place on Sunday June 23<sup>rd</sup>

Barton Bendish Art and Craft Exhibition is over the weekend of 21/22 September.

## **Barton Bendish Parish Council**

Please contact the Parish Clerk for any matters concerning the Parish Council

Mrs Sharon Sweet, Locum Parish Clerk

Email: [bartonbendishparishcouncil@aol.co.uk](mailto:bartonbendishparishcouncil@aol.co.uk)

Further information is available on the Parish Council website

# BEACHAMWELL, SHINGHAM & DRYMERE VILLAGE NEWS

## Beachamwell Village Hall



### Diary Dates

1. April 26th Friday Pop Up Pub
2. May 24th Friday Pop Up Pub
3. May 11th Saturday 'Dance the Night Away' Disco/Dance - from 7pm [see page 18]
4. June 2nd Sunday Open Gardens -
5. June 8th Saturday D D Celebrations - Village BBQ - from 4pm [see page 19]

Have you had a chance to browse the new website yet

[www.beachamwell.org.uk](http://www.beachamwell.org.uk)

If you would like to submit any news or event information for consideration, please fill in the website contact form.

Here's advance notice for a D-Day BBQ on Saturday 8th June from 4pm. It's a chance to come together to remember and celebrate 80 years! 1940s themed dress encouraged. If possible please bring a dessert to share.

Would you like to get involved with village activities? Can you spare a few hours every month? We are looking for people to volunteer with our events and general Village Hall activities. All input gratefully received. Drop us an email via the website contact form or have a chat with Cathy Friend. We'd love to encourage more helpers to expand our activities.

Do you have any ideas or comments on what you'd like to see at Beachamwell Village Hall? Input from Beachamwell residents is hugely important to us so please do let us know if you have any thoughts or feedback. We'd love to hear from you.

Not sure how to contact us? The new website has a helpful contact page where you can submit your enquiry and a member of the Beachamwell Village Hall Committee will endeavour to reply in a timely manner.

**Clare Millar**



# BEACHAMWELL, SHINGHAM & DRYMERE VILLAGE NEWS

## Mobile Post Office

Monday and Thursday 13.00 – 13.15: Tuesday and Wednesday 11.10 – 11.30

## St Mary's Church

The PCC of St Mary's Church, Beachamwell is holding their APCM on Thursday 18th April 2024 at 7.30 pm in the Village Hall. **Susie Rix**

## Beachamwell Parish Council

The Annual Parish Meeting this year was rather fabulous and very well attended.

The next meetings are May 14th Annual Parish Council Meeting at 7pm, July 9th at 3pm, September 10th at 3pm November tbc .

Don't forget to check the website.

**Sarah Hunt** (Parish Clerk and Responsible Financial Officer) 07355694133



# DANCE THE NIGHT AWAY

DO YOU FANCY DANCING THE NIGHT AWAY TO YOUR FAVOURITE TUNES? GET YOUR DANCING SHOES ON FOR SATURDAY 11TH MAY FROM 7PM ONWARDS.

THE BAR WILL BE OPEN. IF POSSIBLE, PLEASE BRING A SAVOURY/SWEET PLATE TO SHARE.



A BEACHAMWELL BOP  
AT BEACHAMWELL VILLAGE HALL  
**SATURDAY 11TH MAY**

BEACHAMWELL VILLAGE HALL

# D-DAY BBQ



SATURDAY 8TH JUNE  
4PM TO 9PM

Village BBQ event, 1940s themed dress encouraged.  
If possible please bring a dessert to share.

REMEMBERING | CELEBRATING

★ ★ ★ 80 YEARS ★ ★ ★





### Rural Dial - a - Bus

We offer a Rural Dial - a - Bus weekly service from a variety of villages into local towns. All our vehicles are wheelchair friendly and we provide a door to door service. Please see timetable below for the day of the week each service runs and the destination.

<u>Village</u>	<u>Monday</u>	<u>Tuesday</u>	<u>Wednesda y</u>	<u>Thursday</u>	<u>Friday</u>
Beachamwell		Swaffham			
Cockley Cley		Swaffham			
Crimplesham				Downham	
Drymere		Swaffham			
Feltwell					Brandon
Foulden		Swaffham			
Gooderstone		Swaffham			
Hockwold					Brandon
Methwold				Downham	Brandon
Northwold				Downham	Brandon
Oxborough		Swaffham			
Southery	Ely *				Downham
Stoke Ferry				Downham	
Weeting					Brandon
Wereham				Downham	
Whittington				Downham	
Wretton				Downham	

Locations marked with a \* are not every week.

Please call us on 01553 770310 for more information on dates and times for our Rural Dial-a-Bus

### Volunteer Community Car Scheme

Our Community Car Scheme offers short or long-distance transport for medical or wellbeing appointments with our friendly volunteer drivers. All Volunteers are DBS checked and transport is provided from 50p a mile. For more information or to book transport please call 01553 770310

### Volunteers Needed

We urgently need volunteer drivers to help out a busy charity to provide transport around West Norfolk. Mileage is paid.

## TEMPORARY BANKING HUB

### Temporary Banking Hub

Have you visited the new Banking Hub yet?

Downham Market Town Council is proud to be able to provide a temporary home to the Banking Hub in the Town Hall, helping to maintain banking services in the town for the benefit of residents.

Cash Access UK, the organisation set up to protect nationwide access to cash, has opened a temporary home for the Banking Hub in Downham Market. The Hub is located at the Downham Market Town Hall on Bridge Street and will provide local residents and businesses with basic banking and cash services.

Open from Monday to Friday, 9am to 5pm, it offers a counter service operated by the Post Office, where customers of all major banks and building societies can carry out regular cash transactions. It also offers a community banker service, where customers can talk to their own bank about more complicated issues.

Community Bankers will work on rotation, with a different bank available on each day of the week:

Monday: HSBC

Tuesday: Lloyds (from week commencing 04th March)

Wednesday: Santander

Thursday: NatWest

Friday: Barclays

If you would like to know more about the Banking Hubs, please contact: [cashaccessuk@cicero-group.com](mailto:cashaccessuk@cicero-group.com)

## COMMUNITY NOTICE BOARD

### MOBILE LIBRARY VISITS

DATE	VILLAGE	LOCATION	TIME
Tuesday	Barton Bendish	Hatherley Gardens	11:10 am
Tuesday	Beachamwell	Old Post Office	09:45 am
Tues day	Drymere	Telephone Kiosk	09:45 am
Tuesday	Boughton	Mill Road	10:45 am
Friday	Wereham	Queen's Close	12.25 am
		Village Hall	12:45 am

For services to all 'Group 4' villages ring Mobile Library Information on 01362 693184 or 01603 222303 or look at the website - <https://www.norfolk.gov.uk/libraries-local-history-and-archives/libraries/your-local-library/mobile-library-routes-and-timetables>

### MARKETS - Farmers' and Indoor

Ely (Farmers')	Second and Fourth Saturday each month 8.00am to 2.00pm
Fakenham (Farmers')	Fourth Saturday each month 8.30am to 12.00pm
Kings Lynn (Farmers')	Second and Fourth Saturday each month
Swaffham (Indoor)	Every Friday 9.00am to 1.00pm
Wisbech (Farmers')	Alternate Fridays 8.30am to 2.00pm

For information:- [www.farmersmarkets.net](http://www.farmersmarkets.net) or your local Tourist Information Office. Check to see if they are actually taking place.

### VILLAGE, COMMUNITY and PARISH HALL BOOKINGS

Barton Bendish	Mary Simons	01366 347 790
Beachamwell	Cathy Friend	01366 328892
Boughton	Pam Wakeling	01366 500429
Wereham	karen.villagehallwereham@ Gmail.com	013665022214

# CHURCHWARDENS AND CONTACTS

## WISSEY VALLEY GROUP

Barton Bendish:	Mhari Blanchfield	01366 347 849
	Linda Webster	01366 347 563
Beachamwell	Peter Berendt	01366 328 779
	Sue Pennell	01366 328 452
Boughton:	Pam Wakeling	01366 500 429
Methwold	Alan Burbridge	01366 727 002
West Dereham	Graeme Pressley	01366 501 179
Wereham	Karen Sams	01366 501 428
Wereham:	Sheila Smith	01366 858 165
Whittington	Susan Smith	07849 157 080
Wretton	Anita Horgan	01366 500 785
Whittington & Wretton	Elaine Taylor	01366 500 948

## PRIORY GROUP

Fincham	Cathy O'Brien	01366 347279
Marham	Philip Fay	01760 444199
	Glenda Jayes	01760 339688
Shouldham	Brian & Ann Hullah	01366 347814
ShouldhamThorpe	Gordon Reid	01366 347253



## ONLINE SERVICES IN APRIL

### Weekly Online Services

Sunday 6.30                      **Service of The Word (West Dereham Cell)**

Tuesday 5.00                    **Prayer Group**

Wednesday 5.30                **Compline**

Full details (including the links) from [janet.tanton@gmail.com](mailto:janet.tanton@gmail.com) or  
[pickwickclub.cc@btinternet.com](mailto:pickwickclub.cc@btinternet.com)

# APRIL 2024 CHURCH SERVICES WISSEY GROUP

## Sunday 7th April Easter 2

9.30 am	Wretton/Stoke Ferry	Service of the Word
9.30 am	Methwold	Holy Communion
6.00pm	Barton Bendish	Celtic Service
6.00pm	Wereham	Evensong

## Saturday 13<sup>th</sup> April

11.00am	Beachamwell	Outdoor Service
---------	-------------	-----------------

## Sunday 14th April Easter 3

9.30 am	Methwold	Service of the Word
9.30 am	West Dereham	Holy Communion
9.30 am	Whittington	Breakfast Church

## Sunday 21st April Easter 4

9.30 am	Methwold	Holy Communion
9.30 am	West Dereham	Celtic Service
9.30 am	Wretton/Stoke Ferry	Holy Communion
11.00 am	Wereham	Holy Communion
6.00pm	Barton Bendish	Evensong

## Sunday 28th April Easter 5

9.30 am	Methwold	Morning Worship
9.30 am	Whittington	Holy Communion
9.30 am	West Dereham	Breakfast Church

Every Sunday 6.30 pm online service West Dereham Cell [see page27]

## Details of all Services on Wissey Valley Benefice Website

<https://www.wisseyvalleybenefice.co.uk/>

## Midweek Services

Wednesdays	9.00 am	Wretton /Stoke Ferry	Morning Prayer
Thursdays	8.30 am	Methwold	Morning Prayer
Thursdays	9.30 am	Wretton/Stoke Ferry	Holy Communion
Thursdays	5.00 pm	Methwold	Evening Prayer





# APRIL 2024 CHURCH SERVICES PRIORY GROUP

## Sunday 7th April

9.30am	Runton Holme	Holy Communion
10am	Shouldham	Morning Prayer
11am	Marham	Holy Communion
6pm	Online	Evening Prayer

## Sunday 14th April

9.30am	Shouldham Thorpe	Holy Communion
11am	Fincham	Morning Prayer
11am	Marham	Morning Prayer
11am	Stow Bridge	Morning Prayer
11am	Watlington	Holy Communion
6pm	Online	Evening Prayer

## Sunday 21st April

9.30am	Wormegay	Holy Communion
11am	Marham	Morning Prayer
11am	Shouldham	Holy Communion
6pm	Online	Evening Prayer

## Sunday 28th April

9.30am	Fincham	Holy Communion
9.30am	Tottenhill	Holy Communion
11am	Marham	Holy Communion
11am	Wimbotsham	Holy Communion
6pm	Online	Evening Prayer

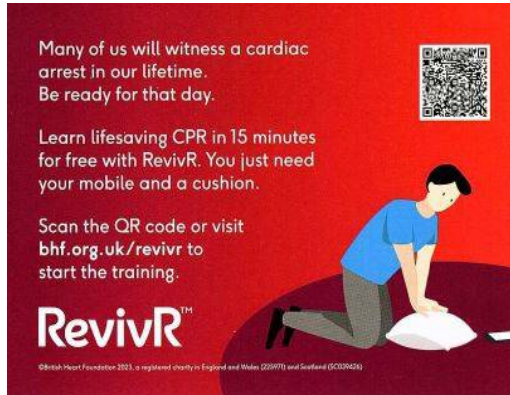
Details of all Services to be found at [https://  
www.westnorfolkpriorygroup.co.uk/Groups/381492/  
West\\_Norfolk\\_Priory.aspx](https://www.westnorfolkpriorygroup.co.uk/Groups/381492/West_Norfolk_Priory.aspx)

## Midweek Services

Wednesdays 10.00 am    Watlington                      Morning Prayer



## BOUGHTON VILLAGE NEWS



Boughton Parish Council, in association with the British Heart Foundation, have installed a Defibrillator in the telephone box on Chapel Road.

It has voice instructions to guide users and prompts and will not allow it to shock unless appropriate.

There is short online familiarisation video available by visiting the BHF website on the poster via the address or QR code.

Please take a look, in the time it takes to have a coffee you could become confident to carry out CPR and save a loved one's or friends life

Boughton Parish Council, in association with the British Heart Foundation, have installed a Defibrillator in the telephone box on Chapel Road.

It has voice instructions to guide users and prompts and will not allow it to shock unless appropriate.

There is short online familiarisation video available by visiting the BHF website on the poster via the address or QR code.

Please take a look, in the time it takes to have a coffee you could become confident to carry out CPR and save a loved one's or friends life!

# BOUGHTON VILLAGE NEWS

## All Saints' Church



Progress on the church seems incredibly slow, although Ian Mack has been chasing it up as much as possible. We now have a preliminary quote for the survey to discover what has caused the problem, and the date of May 1st has been set for the survey to take place. Fingers crossed that it goes ahead. We are going ahead with planning for Open Gardens Day on the second Sunday in June, in the hope

that we'll be able to use the kitchen, so please put the 9th June into your diaries. It would be wonderful to see the usual support from the village on that day, especially as we'll be fundraising more than ever. It's the only open space in the village, not just the church, so everyone's support is needed

***Pam Wakeling (Church Warden)***



# WEREHAM VILLAGE NEWS

## **Village Hall**

### **Monthly activities**

All activities and regular weekly events now also featured in the separate inserted sheet, for Wereham residents. Also details for mobile Library and Post Office.

### **Parish Council**

Next Meeting Date Monday 13th May 2024 at 6.30 pm (To be held in the Wereham Village Hall – Community Room). It is the Annual Parish Meeting followed by Annual Meeting of the Parish Council.

Agenda items must be received before the end of the month prior to each meeting, items received after this time will not be possible to discuss. Please send to the Parish Clerk at [werehampc@gmail.com](mailto:werehampc@gmail.com). The Agendas for meetings are always published on the Wereham Village Notice Board three clear days before the meeting (seven annual meetings), and notified via the Wereham Parish Council Facebook Page and on the website [www.werehamparishcouncil.co.uk](http://www.werehamparishcouncil.co.uk) You will also find minutes of all meetings here too.

Wereham Cemetery, The Row – Interment Area - The Parish Council would like to trace the family/next of kin for some of the interment ashes plots in the Wereham Cemetery as it would like to make improvements Autumn 2024, with gravel inlay and edging. If you are next of kin or know family of those loved ones in the interment area of the Wereham Cemetery, The Row please contact the Parish Clerk, contact details below. The Parish Council would like to seek endorsement from the next of kin for the improvements prior to going ahead.

Highways – Paths and Roads – Defects Please report anything that you see verges, trees, pot holes, main holes, drains to Norfolk County Council Highways via their defects page of their website. You need to set up a login, and once on the site you can easily report issues and upload pictures of the issue. They will then arrange inspection. You are also able to track the report. The Parish Council will report issues that it finds, but if residents do this also we can increase the repairs that we need doing.

<https://apps.norfolk.gov.uk/HighwaysDefect/>

**Helen Richardson**

**Wereham Parish Clerk and Finance Responsible Person**

**Email [werehampc@gmail.com](mailto:werehampc@gmail.com) or Phone/Text: 0779 500 6811**

## WEREHAM VILLAGE NEWS

### **St. Margaret's Festival - 21st July**

We begin preparing for the above Festival very early in the year. We had one meeting in February, and we have planned another on Tuesday 9th April 2024 in the Church at 7pm.

If any one would like to join us, to offer a hand either on the day or beforehand, we would be most grateful. We would love prizes for any of the stalls. May we ask if any of our villagers still have their bridal dresses? We would like to hold an exhibition of bridal wear in the Church on the day of the Festival. Please contact Chris Murray on 01366 500976 if you can help with any of the above, or better still, join us on the 9th April.

***Chris Murray***



# B.R LANDSCAPES

EST 1986



- Garden and site clearance
- Turf supplied and laid
- Hedge removal - planting
- Fencing supplied and erected
- Trees - shrubs pruned or removed
- Digger and dumper with operators
- Stump grinding - Landlord tidys
- Company owned equipment - machinery

MOB : 07774724366 / 01553849802

## Tim's Tree Services



All aspects of tree and hedge work undertaken

Hedges Removed

Stump Grinding

**Over 30 years experience  
Qualified - Insured**

**Call 01553 813140**

**or 07867 764307**

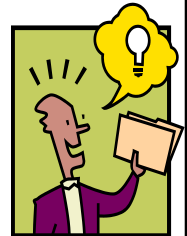
**For your free quote**

**LOCAL MAN - LOCAL RATES**

**Your advert could be here.....**

**Alan Pickering  
01366 386125 or  
07779 787499**

[group4news@gmail.com](mailto:group4news@gmail.com)



# CLAUDIA MORLEY

**Garden & Commercial Landscape Designer**

**City & Guilds - Amenity Horticulture**

**- Garden Design - over 16 years experience**

**Full A1 Scale Plans, any size from a  
small garden to estates & commercial  
landscape projects.**

**FREE NO OBLIGATION VISIT & QUOTE**

[www.fig-forestryandgardendesign.co.uk](http://www.fig-forestryandgardendesign.co.uk)

**01760 338400 / 07824 397727**

# SPRING INTO SEASON

## THE FARMHOUSE AT FINCHAM



Full of character and charm, our West Norfolk venue is versatile with **indoor/outdoor dining**, comfy **bedrooms**, and function space for **weddings**, **wakes**, **baby showers** and all sorts of **special occasions**. We're totally dog friendly too!

### 2 COURSE MID-WEEK LUNCH MENU

Served Mon to Fri, throughout March & April

### EASTER AFTERNOON TEA £22.95 per person

Served 28th March - 13th April. Mon - Sat. Pre-booking required.

### KIDS UNDER 12 EAT FREE with every accompanying ADULT

Available Mon to Sat during Easter School Holidays, when ordering from the Children's Menu.

Excludes Set Menus, Sundays, Afternoon Teas and Events



Bookings Recommended. Walk-Ins Possible. Quote Group4News  
Tel: 01366 347747. Lynn Road, Fincham, PE33 9HE

[www.thefarmhouseatfincham.co.uk](http://www.thefarmhouseatfincham.co.uk)





NEW BOTTLES



**WILD KNIGHT<sup>TM</sup>**  
- DISTILLERY -

**NEW 70cl Bottles - Now Available!**



**Hello! From Matt & Steph Brown**

Since 2001, we have made Beachamwell our home and run Wild Knight Distillery from here. You are invited to stop by, say hello and taste some of our award-winning spirits!

Each month, we'll show you something new... This month it's the arrival of our new 70cl bottles. To buy your bottle visit [www.wildknightdistillery.co.uk](http://www.wildknightdistillery.co.uk) or call us: **01366 32 70 70**.

*Thanks & Cheers!*

## PROFESSIONAL FOOT HEALTH PRACTITIONER



**Peter Stanley**  
MAFHP. MCFHP

**Treatments include:**

- Nail trimming/reduction
- Verruca
- Callus/corn removal
- Ingrown
- Fungal nail/athletes foot
- Diabetes foot care
- Neurovascular assessment

**To book your home visit, please call Peter on**  
**Freephone 0800 066 5499**  
**or 07842 553554**

### Charlotte Rose LicAc



**Acupuncture**  
**Acupuncture for Pain**  
**Facial Acupuncture**  
**Reflexology**  
**Aromatherapy Massage**  
**Cupping Therapy**



Over 10 years experience as a therapist. Fully Insured with Balens.

**Clinics in Stoke Ferry + Castle Acre**

Gift Vouchers Available

Contact: Charlotte: 07855513199 /  
01366 501232  
charlotterose.charlotterose@gmail.com  
www.charlotte-acupuncture.co.uk

### Volunteers **Home** Needed! **START**

Support and Friendship  
for Families

**Do you remember those early years?.....  
Sleepless nights, tantrums + teething.**

If you have parenting experience Home-Start Swaffham & District would love to hear from you. We have families waiting for support and all we ask is for a couple of hours a week commitment. We offer a prep course accredited through the Open College Network which takes place one day a week for 10 weeks. Term time 10am-2pm. So, if you think you can make a difference to a family needing a little help call us today to find out more.

Volunteers will be subject to an enhanced CRB check. We are also looking for trustees, for more info contact us on:

Home-Start Swaffham & District  
The Community Centre, Campinglands,  
Swaffham, PE37 7RB  
Tel: 01760 721 271  
Email: admin@homestartswaffham.org.uk



*Painting Decorating*

MARK WILLCOCKS  
INCLUDING GENERAL  
HOME MAINTENANCE

Fully insured  
all for free quotation  
01366 500057 or  
07716493476

## Warner Pianos

[www.warnerpianos.co.uk](http://www.warnerpianos.co.uk)  
Malcolm Webb CGLI, NTC Dip  
PIANO TUNER

Over 30 years experience  
Action regulation and small  
repairs carried out on site.

01366 328920 or  
07973 263609

**As well as private tuning  
Customers I tune for a  
Number of theatres,  
Concerts, music societies,  
schools and music venues.**

# Every minute, six people over 65 suffer a fall/

**We're here to help.**

To find out more, call us on 01553 616200  
or visit [www.careline-cs.org.uk](http://www.careline-cs.org.uk)



**Careline**  
COMMUNITY SERVICE



**Care &  
Repair**

Magical Council of  
King's Lynn &  
West Norfolk



1170-97324N



FOR BOOKINGS CALL, TEXT, FACEBOOK MESSAGE OR WHATSAPP,  
**07856 787424** (24 HOURS)

EMAIL:  
**INFO@ANNIETHEVETNURSE.CO.UK**

FULLY INSURED, DBS CHECKED AND REGISTERED VETERINARY NURSE: 7262949

- SERVICES INCLUDE:
- DOG CARE PACKAGES & DOG WALKING
  - CAT CARE VISITS
  - PET SITTING
  - SENIOR PET SITTING & MEDICATION ADMINISTRATION
  - BREEDING BITCHES & WHELPING ASSISTANCE
  - WEDDING DAY PACKAGES
  - SMALL HOLDING & HORSE VISITS
  - NAIL TRIMS & ANAL GLAND EXPRESSION

FOR MORE INFORMATION & A FULL LIST OF SERVICES PLEASE VISIT MY WEBSITE:  
**WWW.ANNIETHEVETNURSE.CO.UK**



@AnnieTheVetNurse

## Jen's Pet Care



### Are you at work all day?

Do you need someone to pop in and feed your pet, let it out and keep them company for an hour?

Does your puppy need socialising and some basic training? Maybe you're an older person who needs help exercising and caring for your dog?

Contact Jen at Wretton on 07799 733 463

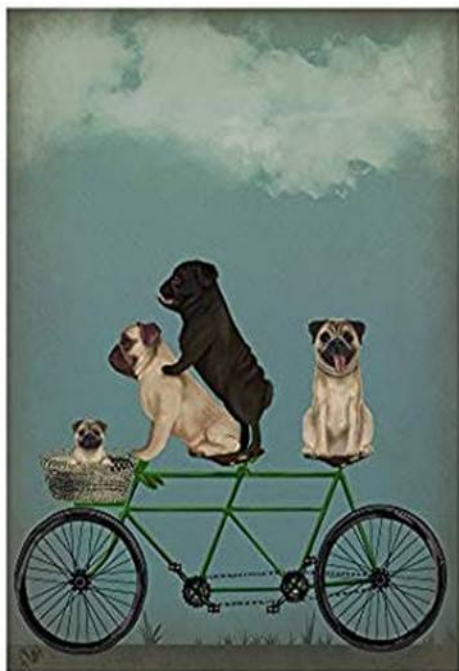
Pet Sitting - Dog Walking - Home Visits

Livestock Care - Puppy Socialising - Pet Care

**30 years experience working with animals**

**Reasonable Pricing - please ask**

[www.facebook.com/JensPetCareWretton](http://www.facebook.com/JensPetCareWretton)





## THE KENNEL CLUB ACCREDITED INSTRUCTORS

### Barking Basics Home Boarding and Dog Training Services



Luxury *dog* holidays. *Bespoke home* from *home dog boarding*. Fully licensed and insured.



One to One dog training, tailored to you and your dog's needs.

Kennel Club Accredited Instructor (KCAI CD).

We work towards the Kennel Club Good Citizen awards and have Listed Club status via the Kennel Club.

Weekly lessons held at the following locations and times.

#### **Tuesday Evenings Southey Village Hall:**

6.30pm Puppy Class

7.30pm Improvers

#### **Wednesday Evening Tottenhill Village Hall:**

6.30pm Puppy Class

7.30pm Improvers

For more info please visit our website:

**<https://barkingbasics.co.uk/>**

or call **Abigail Desborough** on: **07957965623**





# A.J. COGGLES

Family Funeral Directors



**Family Owned & Managed ~ Established 1851**

*A complete caring and personal service offered by a local family business providing advice and guidance at your time of need when you need it most*

**24HR Personal Family Caring Service**

**Individually Tailored Funerals At A Competitive Price**

**5<sup>TH</sup> Generation Independent Family Service**

**Distance No Object**

**13 Bridge Street, Downham Market (01366) 384182**

**1 Blackfriars Street, King's Lynn (01553) 766795**

**67 Lynn Road, Wisbech (01945) 461112**

**40 Greevegate, Hunstanton (01485) 534421**



**WWW.AJCOGGLES.CO.UK**



# R. H. BOND

## Funeral Directors

Salisbury House, Lynn Rd, Stoke Ferry, King's Lynn, Norfolk PE33 9SW

Office Hours:

Monday to Friday 9am - 4pm

Saturdays by appointment only

Sundays closed - 24 hour phone service

Under new management - Debbie Stewart

Tel: 01366 500241

Email: [enquiries@bondfunerals.co.uk](mailto:enquiries@bondfunerals.co.uk)

Web: [www.rhbondfunerals.co.uk](http://www.rhbondfunerals.co.uk)



# Andrew Francis

Local Family Owned Funeral Service  
Our Family serving yours 24/7  
Swaffham: 01760 720 200  
King's Lynn: 01553 762 242

Multi Award winning family business.  
Direct Cremation, Traditional Funerals,  
Fully Guaranteed Pre Paid Funeral plans

[www.afrancisfunerals.co.uk](http://www.afrancisfunerals.co.uk)

PRE-PAID FUNERAL PLANS | CHAPELS OF REST | MEMORIALS



# Thornalley

FUNERAL SERVICES

Behind every independent business  
is a family that cares

[www.tfs.co.uk](http://www.tfs.co.uk)

INCORPORATING CHAPMANS FUNERAL SERVICES

King's Lynn 01553 771399 | Dersingham 01485 598598 | Swaffham 01760 721305



## JET ACCOUNTANCY & BOOKKEEPING SERVICES

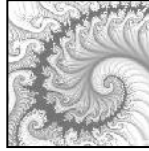
Professional and qualified service offering:

- ◆ Accounts
- ◆ Bookkeeping
- ◆ Self Assessment
- ◆ VAT Returns
- ◆ Payroll
- ◆ CIS Returns

**Tel: Louise Scott (MAAT)**

**07806 792211**

**info@jetaccountancy.co.uk**



## Maths Tuition

years 6 to 11 (GCSE)

One-to-one sessions  
(in person or via zoom)

- expand knowledge
- boost confidence
- improve technique

A Cambridge graduate with 18 years of tutoring experience offers

Individual tuition **£30** (45 mins)

*term time and holidays*

For details and availability  
Contact Katherine Shaw  
07773 – 433180



Your local plumbing and heating specialist

Our fully qualified plumbing and heating engineers cover the following:

- ✓ Boiler Servicing
- ✓ Boiler Repairs
- ✓ Boiler Replacement
- ✓ Boiler Installation
- ✓ All Plumbing and Central Heating Work

Finance options available on boiler installations



Eastern Gas are one of West Norfolk's top plumbing and heating companies working with gas, oil and LPG systems.



T: 01553 750060 | M: 07940367529

E: admin@easterngasltd.co.uk

W: easterngasltd.co.uk



Frustrated by technology?  
Confused by the experts?  
Problems with your: Computer; Tablet;  
Mobile Phone; Broadband; WiFi; Printer;  
Digital Camera; Television?

I can help!

**ade**

Ade Jordan  
Friendly Technology Solutions

Based in Wereham, West Norfolk

Fault finding; Repairs; Installations;  
Configuration; Training

Tel: 07980 140000

email: [help@adejordan.com](mailto:help@adejordan.com)  
[www.adejordan.com](http://www.adejordan.com)

No call out charge. No fix, No fee



## Breckland Pest Control

Wasps, moles, rats, mice, cluster flies, clothes moths & more

*Professional & friendly service*

Ring **Paul** on 01366 328 470 or 0777 600 7201

brecklandpestcontrol@gmail.com

## Bryan Cater Ltd

*Your Local Chimney Sweep*

***Our Services Include:***

*Chimney Sweeping,  
Stove / Wood Burner Installations,  
CCTV Inspections, Chemical  
Treatments, Repairs & more.*

[www.catersweeps.co.uk](http://www.catersweeps.co.uk)

*Fully Insured – No Mess – No Fuss*



Call us on 01366 728342 option 2  
Email: [bookings@catersweeps.co.uk](mailto:bookings@catersweeps.co.uk)



## Ethical Mole Management

Within 10 miles of  
PE37 8AZ

Call Geoff on 07597 912 389  
or 01366 328 204

Fully insured - No mole no fee  
- Find me on line at  
[www.guildofbritishmolecatchers.co.uk](http://www.guildofbritishmolecatchers.co.uk)

[geoffsidons1.wixsite.com/  
norfolkmolescatcher](http://geoffsidons1.wixsite.com/norfolkmolescatcher)

I have 45 years experience  
limiting crop damage—call me  
if you need help

# CARPET CLEANING OVEN CLEANING

**Sofas & curtains cleaned**

**Quality, regular, reliable service  
Conservatory Cleaning, Window Cleaning,  
Patio Cleaning, Gutter & Facia Cleaning,  
Conservatory & Patio Cleaning**



[www.cleantech-norfolk.co.uk](http://www.cleantech-norfolk.co.uk)

*(Card & cheque  
payments accepted)*

**Call Mike on 01485 609223**  
daily 7am - 10pm • 7 days a week

## OvenGleamers

**Professional, Eco-Friendly  
Deep Oven Cleaning**

Ovens, Cookers, Hobs,  
Extractors

Ranges, Agas & Everhots

Fully Insured  
(King's Lynn & West Norfolk)

Peter Edge-Partington  
YOUR LOCAL CHAP FROM  
DOWNHAM

Call 01366-308068//07946-  
455645

More 5\*\*\*\*\* Reviews on Yell  
and Google than anyone else



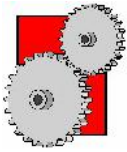
**Shane Walker**

*Electrical Engineer*

**S. Walker Electrical Services**

*Phone number: 07540 378332*

*Email: [s.walker-elec.serv@outlook.com](mailto:s.walker-elec.serv@outlook.com)*



# P.G.M.S.

Fabrication of a variety  
of metals  
Mechanical engineering

## Sparex

Agricultural spares & accessories

### Peter Garner

## Mechanical Services

Shingham Lane, Beachamwell,  
Swaffham, Norfolk. PE37 8AY.

Tel: 01366 328823

E-mail: peter@pgms.co.uk



## R D VOUTT & SON

## PLASTERING

All aspects of plastering & floor screeding.

Contact Bob on 01366 328 545

mobile 07799514635

[rdvoutt@yahoo.co.uk](mailto:rdvoutt@yahoo.co.uk)

# THOMAS B. BONNETT

Bespoke Tools and Hardware

Eynn Rd, Spike Ferry,  
Norfolk, NR33 9SW  
T. 01366 300295

E. info@thomasbonnett.co.uk

Anti powder  
Batteries  
Calor gas  
Door latches  
Electrical cable  
Fire grates  
Gloves  
Hose pipe  
Incinerators  
Jubilee clips  
Knee pads  
Liner line  
Moth balls

"We stock  
items from  
A to Z!"

Est 1909

Nails  
Overalls  
Pegs  
Quality brands  
Ratchet straps  
Sandpaper  
Taraulins  
Undercoat  
Varnish  
Water butt  
Wool  
Yale locks  
Zip polish



- HARDWARE & DIY
- BESPOKE TOOLS
- IRONWORK
- BUILDING SUPPLIES
- STEEL

FABRICATION  
REPAIRS

Find us on 



**Paul Braybrooke**  
***Oil Fired Boiler Engineer***  
**Boiler Servicing**  
**Breakdown Service**

Commissions  
Tank Replacements

Phone 01353 777788  
07946 735691

**Taylor's Solid Fuel**  
**Family run since 1946**

Regular fortnightly Solid Fuel deliveries in your area. Competitive prices and a full range of products.

***“Don't Shiver  
We Deliver”***

Quality top soils and aggregates. Bulk bags and Tipperloads from 1-20 tonnes

Tel: 01842890568 or see us  
on  
[www.taylorssolidfuels.co.uk](http://www.taylorssolidfuels.co.uk)

**WJA TILING**

**The Complete Floor and  
Wall Service**

Ceramics, Porcelain,  
Mosaic  
and Natural Stone  
Under floor heating and  
Karndean

No job too big or small  
All Work Guaranteed

For a free quote, measure  
up or advice

Phone Will on: 07884  
446257

# newrooms

*From inspiration to installation we are an independent company looking to take care of transforming your....*

**KITCHENS**

**HOME  
OFFICE**

**BEDROOMS**



**Come and visit us in our showroom..**

**The Workshops, Brandon Road  
Methwold, Thetford, Norfolk,  
IP26 4RJ**

**Call us on 01366 727417  
info@newroomsdesign.co.uk  
newroomsdesign.co.uk**

Follow us on



## Traditional Values ...



Life has changed so much since this photograph was taken...

But the traditional values of honesty, integrity and service associated with the time are an essential part of our business.

So if you are thinking of buying, selling, letting or renting and seek the reassurance of an Agent practicing these traditional values, yet with a modern approach, please call us on 01366 388991

**Ashton Roberts**

Letting Agents • Estate Agents

19a High Street, Downham Market, Norfolk, PE38 9DA  
info@ashtonroberts.co.uk www.ashtonroberts.co.uk



**St. Johns Way, Downham Market, PE38 00Q**

**01366 382219**

(24 Hour Emergency Contact)

- Purpose built practice with easy access and ample parking on the outskirts of town
- Dedicated sterile operating theatre & dental suite
- Full digital x-ray, endoscopy & ultrasound facilities
- 'State of the Art' laboratory equipment including haematology, biochemistry and our new urinalysis machine - the first in East Anglia
- Independent Emergency Care provided onsite by our highly experienced Veterinary Surgeon of 32 years, 24 hours a day, 365 days a year...

To view our opening hours and for more information visit our website [www.crossingsvets.co.uk](http://www.crossingsvets.co.uk) or find us on Facebook at [www.facebook.com/CrossingsVets](http://www.facebook.com/CrossingsVets)

***"Independent, Professional  
& Personal"***

