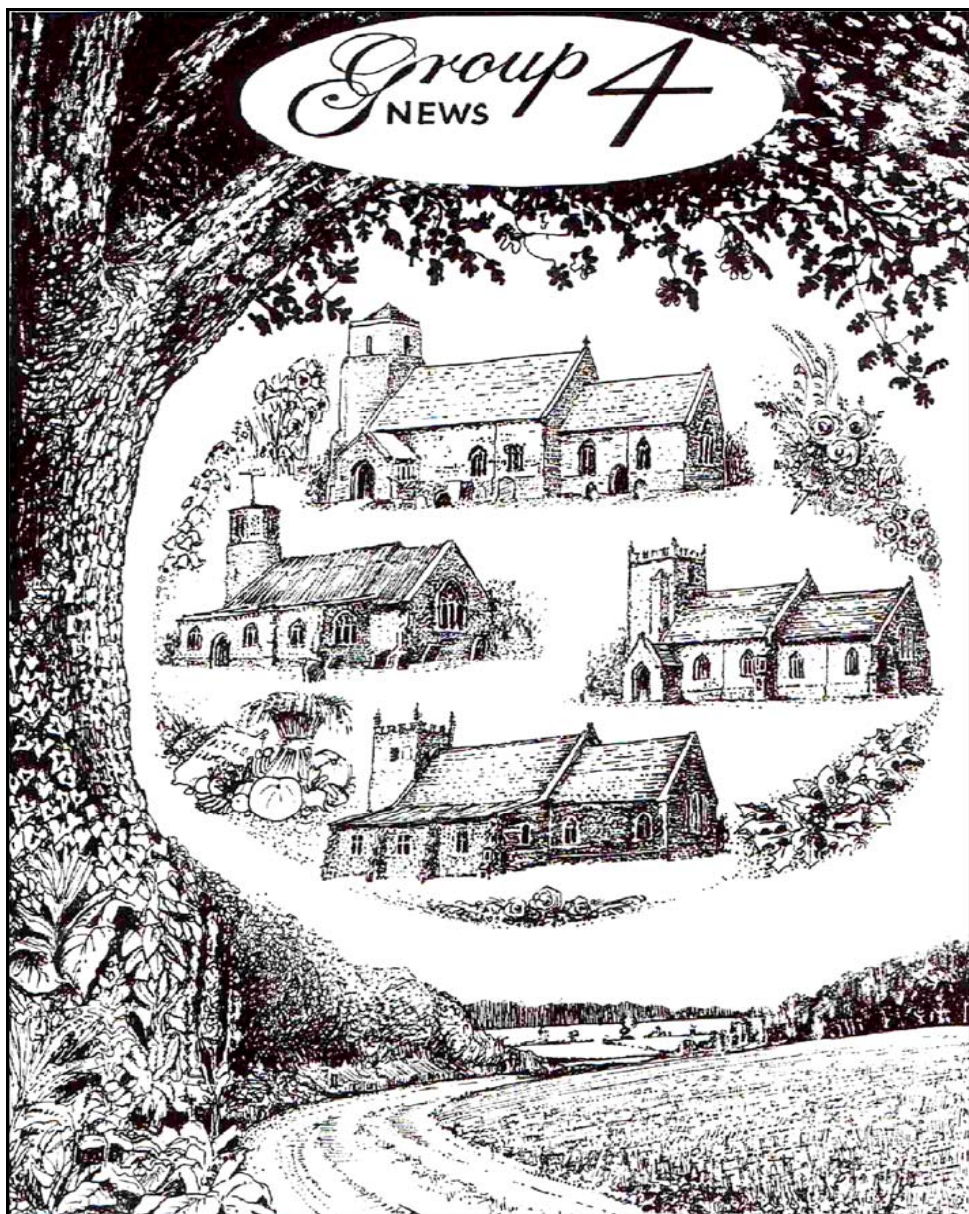


Group 4

NEWS



The Parishes of Barton Bendish & Eastmoor; Beachamwell, Shingham & Drymere;
Boughton; Wereham

April 2013

Cover Illustration drawn by Mark Powell, Beachamwell ©

WELCOME

Please take note of the posters for the 'Switch and Save' campaign as the information is important and not everyone will have read it online. There is a separate poster for Beachamwell as it lies within a different council area, a reminder that our readers are spread over a large geographical district.

The organisers of the Spring Fayre advertised on page 4 have worked very hard to make it a success, so please support it in any way you can. Books of raffle tickets with the possibility of many prizes are now on sale. The churches are a central part of all villages and we rely on support from everyone who lives here to keep them going.

As always, 'Happy Reading'
The Editorial Team
Eileen and Pam

Thanks to all contributors and apologies to any whose work has not been shown in this issue.

We promise to include your articles wherever and whenever possible. Please do keep them coming.

Many thanks to the distributors, we couldn't do without you!!!

© Copyright Group4 News 2010

GROUP 4 TEAM VILLAGE CONTACTS

Barton Bendish: Jill Mason
Sandmere, Church Rd, Barton Bendish
Tel: 01366 347 928
Masons@sandmere66.fsnet.co.uk

Beachamwell: Eileen Powell
20 All Saints Way, Beachamwell
Tel: 01366 328 648
powells@beechamwell.plus.com

Boughton: Pam Wakeling
Robet, Mill Hill Road, Boughton
Tel: 01366 500 429
p.wakeling621@btinternet.com

Wereham: Viv Scott
Orchard House, Flegg Green, Wereham
Tel: 01366 500346
farthings@tiscali.co.uk

Please submit all information through your Village Contacts.

Deadline for copy: 11th of each month

ADVERTISING

Lynda Eddy, Tel: 01366 501 308
e-mail: lyndajeddy@hotmail.com

If you use any of the advertisers in the magazine, please mention where you have seen their advertisement.

WEBSITE

www.group4news.co.uk
Kevin Fisher, Tel: 01366 502224

‘FROM THE RECTORY’



New Rectory
High Street
Fincham nr. King's Lynn
Norfolk
PE33 9AP
01366 348079

Dear All,

In one of the departments of the Natural History Museum in London stands a giant piece of rock which must be at least 2 metres square. At the side of this monolith is a sign which reads, "There is only one thing that is certain in the natural world, that is all things

must change". Robert Gallagher wrote, "Change is inevitable". He went on to say, "...except from a vending machine".

The truth is, as the world around us changes, so do we. The Church at large has never been immune to change. From the very beginning, the Church's roots were firmly entrenched in Judaism and the Jewish Law. As the gospel spread throughout Europe it had to change to enable others to embrace the Christian message. Over the past 50 years or so there have been many changes in the Church, and it will continue to change so that it might spread the Good News within the context it finds itself.

The Church is facing debate and disagreement over a number of issues, including women bishops and gay marriage, but nonetheless it remains the Church of God, serving Jesus and proclaiming the Gospel to all. In this Easter season, as we rejoice in Jesus rising from the dead, the Church is there for you, a doorway to God and the promise of eternal life for all who believe

Yours in God's service

Barbara

BENEFICE NEWS



Country Fayre

A great day out for all the family

Saturday 4th May 2013

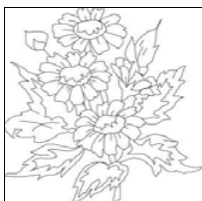
11am – 4pm

Fincham Memorial Hall and Playing Field

**Come and enjoy yourselves. There will be lots to do, lots to eat,
lots to buy, friends to meet and fun to be had.....**

All proceeds towards expenses for the parishes of Barton Bendish,
Beachamwell, Boughton, Fincham, Marham, Shouldham,
Shouldham Thorpe and Wereham.

Enquiries Sarah Addly 01366 347487



Best wishes from the church communities to Anne
Clarke, recovering at home after an accident.

COUNTRYSIDE NOTES

What an awful, cold, dreary, wet winter it's been. Fortunately the end of February and beginning of March were at least dry. Once again in the garden sub zero temperatures have damaged and maybe even killed some plants and shrubs which normally survive British winters. The only time we seemed to have an exceptional lot of birds in our garden this year was when snow actually covered the ground. We usually put out an apple or two for them and these proved extremely popular when the snow came. At first it attracted two or three blackbirds, then there was more. In the end we counted fifteen but only one was female. As usual there were one or two that didn't want to share the apples and tried to keep the others away but, as the cold snap continued, a fieldfare appeared by which time we'd spread out nine or ten apples around the bird table. We wasted an awful lot of time watching the ensuing action. It was on its own the first day and spent the entire time chasing away blackbirds that got near to any of the apples. What was so amusing was that it was so occupied doing this it never had time to eat any itself! The second day another fieldfare arrived so the original one had that to contend with as well which resulted in quite a lot of aggro. The next day there were about ten of them plus the blackbirds. Our garden became a scene of much unrest and by then we were running out of apples. Thank goodness it thawed. The fieldfares and majority of blackbirds (and our entertainment) disappeared. Our garden was once again a peaceful place. Why I wonder were the apples suddenly so popular in sub zero temperatures?

This winter there has been extensive frost damage to many of the old brick, flint and chalk walls. The chalk particularly has flaked very badly even where it's comparatively new. The ancient listed flint wall to the right of our house has also suffered greatly. Already bowed between the buttresses it bulged a bit more then, a few weeks ago, part of it caved in. Health and Safety being what it is there is now the most amazing configuration of scaffold supporting the rest.

There have been a few pluses though this winter. The aconites and snowdrops, preserved as they were in the equivalent of a fridge, lasted for weeks. Some days the combination of snow and frost created a fantastic winter wonderland. One morning (January 17th I think) we braved the cold and ventured out shopping. Never have I seen such incredible beauty. Every branch and twig of every tree and bush was covered in snow and hoar frost, sparkling in the sun against a vivid blue sky. It was one of those never-to-be-forgotten sights. One thing I like about winter is that most of the trees and hedges are bare. Without leaves every tree reveals its individual character, when fully clothed they lose their identity. It's not all bad.

Jill Mason

GARDENING TIPS

The anticyclonic conditions experienced in the latter part of February and into the first days of March, accompanied by the cold drying winds, have certainly helped to drain our gardens – some more than others no doubt. At the time of writing I have been able to fork over some of my flower borders removing any winter debris and over wintered weeds. By the time you read this we shall all know what the rest of March has been like – I just hope the weather pundits who have been talking about the cold conditions carrying on until Easter are proved wrong! I personally think they will be, but we shall have to wait and see! It would be nice to have a warm and dry Easter.

If you didn't manage to get your roses pruned in March then you should do so without further delay and don't forget to give them a feed and a spray with a fungicide. Whilst on the subject of feed, after all the rain last year and earlier this year, the whole garden content will probably need feeding much more than usual as the soil will have been well and truly leached of most of its nutrients.

This is the month to get your lawns in good shape for the remainder of the year. When the surface is dry cut the grass down to height of approximately one inch (2.5cm), scarify the surface removing the waste that has been raked out and then give the lawn and other grassed areas a spring feed and, in this instance, I would tend to feed a little more generously than would normally be the case. Be careful if you are using a granular feed - make sure you spread it evenly to avoid scorching. Personally, I now use liquid feed which reduces the scorching factor very considerably if not entirely. If you have bare patches in the lawn this is the time to reseed. Rough up the areas in question with a rake, sow the quality of seed that you prefer and cover it with a fine layer of seed compost, tamp it down level and water gently so that you do not wash away the covering of soil. Keep the area moist and if the weather is warm you should have germination in about ten to fourteen days. Try not to put the mower over such an area for about six weeks otherwise you can drag the young grasses out of the ground. Instead cut the reseeded areas with hand shears and carefully remove the trimmings.

Generally speaking you can really press ahead with all aspects of seed sowing and vegetable plantings as and when the time is right to achieve successional cropping. Do keep an eye on the weather forecasts – frosts are a danger right up to the end of May and possibly even into early June. Potatoes are the main worry as far as frost is concerned. If you have sown an early row or two have some small cardboard boxes available so that you can just pop them over the new growth if and when Jack is about!

If you didn't take your dahlia cuttings last month here is a short cut. Simply push away the growing material round the old tuber and actually cut away a small piece of the original tuber on which the new shoot is growing. Using this method, you should get almost 100% success so you can pop the new growth straight into a pot on its own!

Have a look at your soft fruit bushes and cut out any wood that has become a casualty of the colder weather. Clear away any undesirable weed growth and apply a top dressing of sulphate of potash hoed or watered into the top surface of the soil. Don't over do it, keep to the prescribed amount and this simple treatment will improve the quality of the

fruit. Similarly applied in the same way around larger fruit trees, along the rows of raspberries and your 'special' shrubs and flowers will make just that extra difference to the norm. If any of your raspberry canes have broken away from their ties over the winter cut off any damaged pieces and retie now before the fruiting spurs appear.

The end of March and early April is the time to be keeping an eye open to spot the first signs of aphids. I have found some already in my greenhouse on ivy leaf geranium cuttings that have been over wintered. In this instance, because the plants were well advanced, I was able to nip out some of the affected shoots but in the end had to resort to a spray as well.

I have just read through the notes I wrote for April 2011 and I was amazed to realize I could almost have written the same about the weather on this occasion. The pattern of weather was so similar and it was followed by a very dry and warm period. I wonder shall we have another nice summer? Only time will tell!

Roy Coughtry

Spring **will** come.....

When daisies pied and violets blue
And lady-smocks all silver-white
And cuckoo-buds of yellow hue
Do paint the meadows with delight,
Love's Labours Lost (5.2.900-4)

Answers to the quiz on page 63

- | | |
|--------------------|-------------------------------------|
| 1. Temperature | 13. -40 degrees |
| 2. Clouds | 14. Central Processing Unit |
| 3. True | 15. Edwin Hubble |
| 4. Warming | 16. Web browsers |
| 5. Meteorologist | 17. False |
| 6. Atacama | 18. Read Only Memory |
| 7. True | 19. International Business Machines |
| 8. Hailstones | 20. Isaac Asimov |
| 9. Snow | 21. True |
| 10. False (25.4 m) | 22. World Wide Web |
| 11. Barometer | |

INCINERATOR UPDATE

During the public inquiry it has been interesting to note that the health consultant working for Cory Wheelabrator (CW) also appeared as a witness on behalf of the tobacco industry when the US Gov was considering laws to ban smoking at work. At the time he argued there was not enough evidence to show smoking was harmful. During cross-examination at the incinerator inquiry he acknowledged it would release fine particulates, dioxins and heavy metals. CW still refuses to give the specification of their intended pollution filters arguing it is not a planning matter. It is important, because some legally permitted pollution filters are not very effective compared to others. If CW intended to use the better performing filters you might expect they would shout about it. During cross-examination CW's air quality consultant confirmed dioxins, cadmium and mercury emissions would only be measured for a maximum of 16hrs per year.

The public inquiry continues sitting 4 days a week, Tue- Fri 09:30 start at the Professional Development Centre Kilhams way, King's Lynn next to the Fire Station. (access via Estuary Road). At an evening session on Tuesday 9th April the public will have another chance to speak 18:00-22:00hrs (there will be no daytime sitting on that day). The first of KLWIN's witnesses is expected to give evidence from 11th April.

Following the 2011 referendum just two of West Norfolk's County Councillors stood up to say our votes matter. After making a principled stand to defend voters' rights both Cllr Brian Long and Cllr John Dobson were then attacked by their own party colleagues for putting constituents first. In May their colleagues will be knocking on doors asking for West Norfolk's vote in the County Council elections. Voters can decide whether they want councillors who put voters interests first or those of the party leader.

Together with the Majestic Cinema KLWIN intends to show the important Jeremy Irons documentary 'Trashed' shows what is happening with the world's waste. TBC 6th April.

KLWIN Events at Fairgreen Farms, Hill Rd, FairGreen Middleton PE32 1RN

Tel: 01553 840640

13th April 9-1pm Coffee & Crafts-produce.

May - Back by popular demand KLWIN's 2nd Bollywood Curry Night, tickets in advance only.

22nd June African music & dance with the Brilliant Anna Mudeka Band.

Mike Knights Fairgreen Farms, Middleton

Beachamwell Book Group Tuesday April 2nd

7.00 - 9.00pm

Beachamwell Memorial Hall

Book to be discussed at this meeting

'The Prime of Miss Jean Brodie'
by Muriel Spark

£2.00 + Bring & Buy Bookstall

All welcome

Enquiries:

Leah Spencer 01366 328536

Beachamwell Wednesday Walkers

Wednesday April 3rd

Meet at 10.30am outside
Beachamwell Memorial Hall

[Dogs to be kept on leads please]
Walk will be approximately 2 hours

Enquiries:

Philip Spencer 01366 328536



Beachamwell WI Thursday April 4th

7.30pm

Beachamwell Memorial Hall

**'How the WI came to
Sandringham'**

Maureen Rispin

Enquiries:

Jenny Gabrielsen 01366 328297

Shakespeare said.....

Expectation is the root of all heartache.
Love all, trust a few, do wrong to none.

Life's but a walking shadow, a poor player,
that struts and frets his hour upon the
stage, and then is heard no more; it is a
tale told by an idiot, full of sound and fury,
signifying nothing.

William Shakespeare

From April 2nd the bin service is changing
to alternate weekly bin collections and
there will be a weekly collection of food
waste. Calendars are being posted to
every home and will be addressed to 'The
Occupier'. If you haven't already received
your new calendar please contact West
Norfolk Council on 01553 616200 or visit

www.west-norfolk.gov.uk/

Come and Join us at St Andrew's

Breakfast Church

In the Village Hall

Barton Bendish

On Sunday 7th April at 9.30am

Enjoy a full cooked breakfast

A chance to enjoy the fellowship of others
and get your Sunday off to a very good
start!!

Everyone very welcome, especially
children, and those not comfortable with a
formal service.

For more details contact

Linda 347563 or Mhari 347849

Beachamwell

Scrabble

**Wednesday
April 10th
2 - 4pm**

Orchard House,
The Street
Beachamwell

Enquiries:

Sonia Williams 01366 328774

Beachamwell 'Afternoon Tea and a Chat'

**Wednesday
April 17th
2 - 4pm**

**Beachamwell
Memorial Hall**

Enquiries

Graham & Sonia Williams
01366 328774

Beachamwell Table Top Sale

**Sunday April 21st
10am - 4pm**

**Beachamwell Memorial Hall
Refreshments available**

Beachamwell Bric-a-brac Team, who
are organising this event, invite you
and your friends to come to this
popular event.

Enquiries:

Mary Riches 01366 328999
Sonia Sandell 01366 328441

Quiz Night

Saturday April 20th

7.30pm

Barton Bendish Village Hall

Teams of up to 6 people

£3.50 per person

Coffee and tea will be available but please bring your own food and drink

To book your table please contact
Linda 347564 or Janice 347983

Beachamwell Craft Group

Thursday April 25th

2 – 4.30pm

Beachamwell Memorial Hall

We knit, we sew, we crochet,
we embroider...

We also chat and laugh, eat biscuits
and drink tea & coffee.

Why not join us?

£1.00 + Bring & Buy

All welcome.

Enquiries:

Leah Spencer 01366 328536

Beachamwell Coffee Morning and Plant Sale

Saturday April 27th

10am - 12 noon

Orchard House

The Street

Beachamwell

All money raised will contribute
towards the cost of flower
arrangements

at the Joint Flower Festival with
Barton Bendish in July

Enquiries

Sonia Williams

01366 328774

Nar Valley Ornithological Society (NarVOS)

Tuesday 30th April 2013, 7.30pm at the
Barn Theatre, Sacred Heart Convent
School, Swaffham. Access and parking
from Sporre Road.

Please come along to this illustrated talk
by Nick Moran, entitled:

BIRD MIGRATION IN THE MIDDLE EAST

Nick Moran's talk will focus on the United
Arab Emirates. Nick works for the British
Trust for Ornithology in Thetford.

Visitors most welcome. Admission £2 on
the night if you are not a NarVOS member.
For more information about this meeting or
NarVOS call Ian Black on 01760 724092

DIARY DATES

1. **May 1st** Beachamwell Wednesday Walkers Memorial Hall 10.30
Sue Pennell 01366 328452
2. **May 4th** Saturday The 8 Parish Country Fayre Fincham Memorial Hall TBA
Sarah Addly 01366 347487
3. **May 5th** Sunday Beachamwell Half Marathon 9am
Brain and Carole Wilson 01366 328628
4. **May 11th** Saturday Spring Quiz Shouldham 7pm
Brian and Ann Hullah 01366 347814
5. **June 2nd Sunday** Barton Bendish Open Gardens
Maureen Tasker 01366 347432
6. **June 9th** Sunday Boughton Open Gardens *Pam Wakeling 01366 500429*
7. **June 16th** Sunday Wereham Open Gardens *Lizzie Baddock 01366 500233*
8. **June 23rd** Sunday Beachamwell Open Gardens *Alan Butler 01366 328817*
9. **June 29th** Saturday Barton Bendish Big lunch Pot Luck Picnic
Val McAlister 01366 347570 and Maureen Buck 01366 347703
- 10 **July 13th** Saturday Beachamwell Barn Dance & Hog Roast, St John's Farm
Caroline Sanderson 01366 328244
- 11 **July 14th** Sunday Barton Bendish Jazz Picnic 12 - 3
Mhari Blanchfield 01366 347849 and Linda Webster 01366 347563,
12. **July 20th** Saturday Boughton Jazz Picnic 12 - 3.30
Paul Coulten 01366 500315
13. **July 20th** Saturday Fincham Quiz Memorial Hall 7 for 7.30
Babs Porter 01760 444 116
14. **July 27th & 28th** Saturday & Sunday Joint Flower Festival Barton Bendish and Beachamwell. *Church Wardens - page 38 for telephone numbers*
15. **August 18th** Sunday Beachamwell Horticultural Show
Carol Wilson 01366 328628
16. **August 25th** Sunday Beachamwell Village Fete
Matt Brown 01366 328002
17. **September Friday 13th** Harvest Supper Fincham
Babs Porter 01760 444116
18. **September 28th & 29th Saturday & Sunday** Barton Bendish Art & Craft Weekend *Mhari Blanchfield 01366 347849 & Linda Webster 01366 347563*
19. **Saturday October 5th** Group Harvest Supper Boughton All Saints' Community Centre
Pam Wakeling 01366 500429 & Sandy Reid 01366 500743

Calling all word game and crossword fans! The new Barton Bendish quiz sheet is now available. There are 50 questions with answers all on a 'Drinks and Beverages' theme. This quiz will keep you entertained for hours and only costs £1! There is a prize of £15 for the winner. Names of correct entries (or those who have the highest number of correct answers) will be put 'into a hat' and the winner drawn in May. To get your sheet you can contact:

Mhari Blanchfield 01366 347 849 Linda Webster 01366 347563 Jill Mason
01366 347928 (Barton Bendish)

Ann Lewing 01366 328350 (Eastmoor)

Margaret Webster 01366 328888 (Beachamwell)

Debbie Fisher 01366 502224 (Boughton)

Lynda Eddy 01366 501308 (Wereham)

The Berney Arms 01366 347995 (Barton Bendish)

Post Office, (Fincham)

Quiz sheets are also available in St Andrews Church and at Barton Bendish fund raising events.

You are invited to join

WEREHAM VILLAGE HALL BONUS BALL CLUB

Select your Bonus Ball number
for £2.00 per month to be in with

the chance of winning the
monthly lottery draw for £50.

Interested?? Contact Helen
Richardson on 01366 500174 or

[helenan-
dadam82@btinternet.com](mailto:helenan-dadam82@btinternet.com).

An Exhibition of Paintings

By

The All Saints' Painters

All Saints' Church Stoke

Ferry

Norfolk PE33 9SF

Saturday 18th May to
Sunday 2nd June

Open from 10-5 daily



**Monday 22 April 2013 7.30 pm
Swaffham**

**Community Centre (Meeting
Room)**

**Annual General Meeting (AGM)
Swaffham & District Swimming
Pool Association (S.P.A.)**

**Please contact: Just turn up – no
need to book – Everybody is
welcome**

SPECIAL EVENT PLANNED?

NEW Range Cooker

NEW Larder Fridge

Music System....



All available when you hire

WEREHAM VILLAGE HALL!



Contact Doreen
on 500218 for
Bookings

Swaffham ARTS

**'Modern Jazz Quartet
with Vocalist'**

Ivan Garford with Joe Ringer

Sunday April 28th 3.00pm
Swaffham Assembly Rooms

£7.00 for members

£10 non-members

Accompanied children free

Tickets from

Green Parrot 01760 724704

Ceres Bookshop 01760 722504

Enquiries

Eileen Powell 01366 328648

WEREHAM VILLAGE HALL AGM

TUESDAY APRIL 9th

6PM IN THE VILLAGE HALL

ALL WELCOME





How is Your Health Today?



We all know that what we eat has a great impact on our health!

Do you find eating for Health & Pleasure difficult to achieve and also very confusing due to the abundance of marketing messages?

At Orchard Clinic I will guide, encourage and support you through a dietary programme that I will design especially for you, which will help you towards better Health & Wellbeing.

For a Free 15 minute Consultation

Call me at **Orchard Clinic** on **01366 347452**

when we can discuss whether a full consultation could really help you.

Visit: www.nutritioninnorfolk.co.uk for further information

Special interest in supporting gastro-intestinal health and functional imbalances

Jane Rose-Land – Nutritional Practitioner
BSc NutMed, MBANT, Registered CNHC



Asparagus Farm Shop

St John's Farm, Beachamwell

01366 328244



Open every day
April, May & June



Asparagus cut fresh every day

Seasonal Local Produce

Homegrown Lamb

Email: carolinesanderson@btconnect.com

RECIPE OF THE MONTH

MOLLY CAKE

Ingredients

250g stoned dates, roughly chopped

300mls water

85g plain flour

3 tsps baking powder

1 tsp ground mixed spice

85g wholemeal flour

500g mixed dried fruit

50g ground almonds

80mls orange juice

Method

Preheat the oven to 170degrees C/Gas 3 and line a 900g loaf tin with baking parchment

Put the dates and water in pan and bring to boil

Remove pan from heat and set aside.

Sieve plain flour, baking powder and mixed spice into a bowl.

Add the wholemeal flour, mixed fruit and ground almonds. Stir to combine.

Stir in the wet date mixture and orange juice. Mix well.

Spoon into the loaf tin.

Bake for 45 –50 mins, or until a skewer comes out clean.

Turn out on to a wire rack.

Wendy Roberts

Nicholas Hammond Academy, Brandon Road, Swffham

The Parent Staff Association welcomes you to our:-

GRAND INDOOR 'CAR BOOT' SALE SUNDAY 7 APRIL 2013

DOORS OPEN : 11AM TO 2PM (*Sellers welcome to set up from 9am onwards*) Tel.
07825 025504 for further details



The Bedingfeld Arms



(9 Bedroom Coaching Inn)

A Stone's throw from National Trust's Oxburgh Hall

We are open 7 days a week

Serving Cask Ales & Fine Wines, Frothy Coffee & Exotic Teas

BED & BREAKFAST

5 cosy & contemporary Coach Rooms & 4 Individual, feature rooms with Village views
including Full English Cooked Breakfast

RESTAURANT

Monday to Saturday 12-3 pm and 6-9 pm

Sunday Lunch 12-3 pm

(choice of roasts & variety of Bar Menu favourites)

FAMILY OCCASIONS OUR SPECIALITY

Friendly Atmosphere. Everyone is Welcome.

A home from home...

LATEST WEBSITE OFFERS

www.bedingfeldarms.co.uk

Facebook/Twitter also on Oxborough Messenger Website

Phone Enquires – 01366 328300 (Best to call between 9-12 or 3-6 pm)



Sunday Evenings Invitation to charities wishing to host their fundraising events
Kitchen closed but bar open & log fire still burning!

Local Lodging

Staff accommodation needed in nearby area.

Extra Tax Free Income. Call Catkin Parker for details 01366 328 300

**THE
BERNEY
ARMS**



Church Road, Barton Bendish

**Traditional village Inn offering luxury accommodation
and restaurant with AA Rosette**

Open 7 days a week

Real ales, good food and a warm welcome



Open Monday to Saturday

from 12 noon to 11 pm

Sundays from 12 noon to 10 pm

**Locally sourced, home cooked food
served every day**

**Enjoy our extensive gardens & unique Children's Play Church
Tower, traditional deckchairs, & large multi coloured bean bags**

Free Wifi available in the pub, gardens & rooms

**Come and try out our speciality coffees and chocolate including
Nestle Grand Cru Coffee and Cailler Swiss Chocolate - even more
delicious served with homemade cakes**

**Check out the website for details of all the menus
and the diary of events - www.theberneyarms.co.uk**

or call 01366 347995

Phil, Sue and the team will be happy to help with any enquiries

**Premier
Holiday accommodation
in Wereham
overlooking the pond**

**4* very comfortable, well
equipped 4 bedroomed house
Sleeps 10, 2 bathrooms**

Ideal if you have family or friends visiting

Good discounts available for
Group 4 News readers!

For more details please Tel Debbie
or Ian Rye 01366502083 or
07506689800 or see website
www.wix.com/ryeholidays/theoldschoolhouse

K.J.Catering Services

21 Main Road Brookville,
Thetford, Norfolk

**01366 728858
or 07542 923909**

kjcatering@btconnect.com

www.catererssuffolkandnorfolk.com

**Outside Catering
And
Hog Roast &
Bar-B-Q
Specialists**

K.J.Bar Services

**Fully Licensed
for all occasions**

K.J Catering is a
family business based on
quality food and service



| | |
|------------------------------|---|
| Quality Service | For Quality Domestic Cleaning |
| Affordable Prices | Call 01366 384970 |
| Trustworthy Staff |  |
| Clean Home | www.deftcleaning.co.uk |

"Petcutz" **DOG GROOMER**



Small/Medium Dogs
NVQ 2 and 3 qualified
in animal care - dog grooming

From bathing, nails trimming, clipping
and scissoring to hand stripping.

For all your dogs requirements
ask for Rachel on
01366 501152 or 07584 279384

Pet Dog Training

Group classes at
Narborough and Swaffham

call Rebecca on

07906 422432

or e-mail via
www.peddarsdogtraining.com

Private lessons, Agility and
other classes available



Jen's Pet Care



Are you at work all day?

Do you need someone to pop in and feed
your pet and let it out? Or keep your pet
company for an hour? Does your cat
needs feeding while you're out? Or
perhaps your puppy needs socialising
during the day?

Contact Jen at Wretton on

07799 733 463

Pet Sitting - Dog Walking - Home Visits
Livestock Care - Puppy Socialising



30 years experience
working with animals

Reasonable Pricing - please
ask



Jen's Pet Care - Simply the best



Drymere Lodge Boarding Cattery

All New.....

New flooring and new roofs
Freshly painted
Endless water bowls

New litter trays and
fresh bowls every day

Fully heated
Cuddles guaranteed!!

Please come and look
still low rates !!

www.drymerelodgeboardingcattery.co.uk

Call Angela on 01760-723468



School Term Time:
children aged 2 to 5

Holiday clubs for
2 - 8 year olds

15 hrs a week funded
places for children ages 3
& 4

Places available for
Special Educational
Needs

Tasty hot meals provided

LITTLE OAKS PRE-SCHOOL

AND HOLIDAY CLUB

01366 502150

www.little-oaks-preschool.ik.org



Three trained staff:
NVQ2, NVQ3,
BA(Hons)
EYPS awarded

OFSTED Inspected

Open 50 weeks a year

Mums and Tots group:
Tuesday 1.00-3.00pm

*Parent quote: "...it has a
great reputation and being
able to take our son to a
local, well respected pre-
school is fantastic."*

A warm, friendly welcome is waiting for you!

Sessional childcare : Monday to Friday

Pre-School Manager: Debbie Sammons, 47 Wretton Road, Stoke Ferry, 01366 502150

Email: littleoakspreschool2002@yahoo.com

Methwold Nursery School and Pre-School

Experience for yourself the welcoming atmosphere of our nursery where exceptional care, homely surroundings and wonderful large garden are second to none. Our highly qualified experienced staff will ensure that each child's individual needs are met and provide them with the opportunity to make new friends, develop in confidence and become independent whilst;
Learning through play!

**Open all year Monday to Friday 7am to 6pm
from age 3 months to 6 years**

Breakfast, After School and Holiday Clubs up to the age of 6
570 hours of Free Child Care* for **all** children residing in Norfolk/Suffolk
over the age of 3 and 4 years. Child Care Vouchers Accepted

Visit our website to view 'The Tardis' and learn more about us!

www.methwoldnurseryschool.co.uk

39 Stoke Road, Methwold, Thetford IP26 4PE Tel: 01366 728419

**Subject to Local Authority Terms and Conditions*

NATIONAL TRUST



Oxburgh Hall

Tel: 01366 328258

April

House and Garden

**open every day
during
Easter
school holidays from
23 March - 17 April
11am – 5pm**

Tuesday 16 April

10am – 11.30am

Nordic Walking

Have you ever wondered what Nordic Walking is?

Come and find out at Oxburgh Hall. We are offering taster sessions with a fully qualified instructor. The session lasts about an hour, covering the basic technique and giving an insight into how the poles can propel you along and work the whole body. All equipment will be provided; please wear comfortable shoes. You may wish to bring something to drink while you are walking but tea/coffee and biscuits will be provided at the end.

£8. Booking essential.

CHURCH FARM, STOW BARDOLPH

Open Daily 10am - 5pm

7th Feb - 3rd Nov 2013

PLUS Winter Opening
Thursday - Sunday



- Indoor Treehouse
- Adventure Playarea
- Huge Undercover Sandpit
- Pedal Tractors
- Shop, Lunches & Teas
- Nature Walks
- Tractor Tours

www.churchfarmstowbardolph.co.uk

Fun for all the Family
Whatever the Weather

Just off the A10 near
Downham Market,
Norfolk, PE34 3HT

01366 382162



Bed & Breakfast Rose Cottage

*Downham Road,
Fincham,
Norfolk,
PE33 9HF*

Reasonable Rates 01366 347426



*Featured in Which?
Good Bed &
Breakfast Guide*



Hockwold Country Fair

Sunday June 2nd 2013

Wilton Farm, Hockwold, IP26 4NA
10.00am - 5.00pm

Vintage Tractors Food Stalls Trade & Craft Stalls
Ring Events

Bookings are now being Taken for Trade & Craft Stalls

Steam Engines Childrens Rides Beer Tent
Side Shows Classic Cars Inflatables

A Great Day Out For All The Family

Adults £3.50 Children(5-16) £1.00

For further details phone or email Tony on
07876 780100 or tony.crosby@tiscali.co.uk



BIG SWITCH AND SAVE

- Breckland's Big Switch and Save could help you save money on your energy bills.
- Register now for free and without obligation and we could find you a great deal.
- We'll tell you how much you could save and you decide whether to make the final switch.

IT'S QUICK
IT'S EASY
IT'S HASSLE-FREE

REGISTRATION ENDS 8 APRIL 2013

To register log on to www.bigswitchandsave.co.uk.
For other ways to register contact us on 01362 656870.



Swaffham Chamber Music Festival

'The Maggini Quartet'

Friday May 24th 7.30pm

*Barn Theatre, Sacred Heart Convent,
Swaffham*

Saturday May 25th 7.30pm

Swaffham Assembly Rooms

Sunday May 26th 12.noon

Oxburgh Chapel, Oxborough

Further Information

www.maggini.net

Eileen Powell 01366 328648

Open Gardens Days in all the
Barton Bendish group villages
during June

June 2nd

Barton Bendish

June 9th

Boughton

June 16th

Wereham

June 23rd

Beachamwell

BARTON BENDISH AND EASTMOOR VILLAGE NEWS

Afternoon tea There was a disappointing turnout for the Afternoon Tea on the 9th March (possibly because of the cold, wet weather) but the sandwiches and cakes were good as was the entertainment. It certainly brightened up an otherwise miserable afternoon and raised £126 for St Andrew's. Thanks from Linda and Mhari to all the ladies who provided cakes and who helped to prepare the tea and also to our very talented entertainers.

Beware! A theft of heating oil has been reported in Barton Bendish so take care and if you see anything suspicious please contact the police.

Swaffham Community Hospital

I am stepping into Lissa Kinsey's shoes and taking on the Annual Fund Raising for the Swaffham Community Hospital in Barton Bendish and Eastmoor. I will be dropping the envelopes through letterboxes in early April and collecting them later in the month. We need to support this hospital and all donations will be gratefully received. Thank you in anticipation. *Maureen Buck*

Quiz Night Barton Bendish Quiz Night is on April 20th at 7.30pm. Teams of up to six at £3.50 a head with free tea or coffee provided. Bring any other food and drink.

Barton Bendish Film Club

Les Miserables is the next film scheduled to be shown in June by the Barton Bendish Film Club. *Advance booking only.*

Open Gardens

Barton's Open Gardens Sunday is on June 2nd. If you haven't opened yours before it would be very nice, particularly for our regular visitors, to have something fresh to look at. It doesn't need to be either grand or perfect. Please save any unwanted plants you may have for the plant stall.

Pot Luck Picnic Barton Bendish Parish Council is again organizing a 'Big Lunch' Pot Luck Picnic for villagers and their families on Saturday 29th June 2013. The Big Lunches were started in 2009 by the Eden Project to be an annual Get Together for neighbours across the UK. Last year's Jubilee Big Lunch was the most successful yet with 8.5 million taking part. As we don't expect to be getting any grants this year to cover expenses we

are planning to hold a Raffle and would appreciate donations of Raffle prizes. Any extra funds raised will go towards other Community Projects.

Further details in next month's G4 *Val and Maureen*

BARTON BENDISH AND EASTMOOR VILLAGE NEWS

Picnic After the success of last years 'Big Lunch' on the Jubilee weekend, we are planning to hold another Pot Luck picnic this summer. The Provisional Date is Saturday 29th June. Maybe this year the weather will be better, and we will be able to hold some of the outside games and competitions that had to be cancelled last year. If you are interested in attending could you please tell us so that we know if it is worth holding another picnic. Nearer the time we will need to have some idea of what dishes people will be bringing

Contacts:- Valerie McAlister 01366 347570 and Maureen Buck 01366 347703

Jazz Picnic Due to a clash of dates the Jazz Picnic will take place on Saturday 13th July a day earlier than originally planned. We hope this does not cause any inconvenience

Flower Festival

This year it is Barton's turn to host the joint Flower Festival held with Beachamwell. It will be held over the weekend of July 28/29th July and the subject is 'Book Titles'.

New Quiz Sheet The new Quiz sheet with a 'Drinks and Beverages' theme is now available. See advert for details.

FORTHCOMING EVENTS FOR 2013

SAT APRIL 20th QUIZ NIGHT 7.30pm Barton Bendish Hall see advert

SUN JUNE 2nd GARDENS OPEN

SAT JUNE 29th POT LUCK PICNIC

SAT JULY 13th JAZZ FESTIVAL Barton Bendish Hall

SAT/SUN JULY 27/28th JOINT FLOWER FESTIVAL St Andrew's Church

SAT/SUN 28/29th SEPTEMBER ART and CRAFT EXHIBITION

THURS/FRI 21/22nd NOVEMBER WREATH MAKING (also possibly a daytime workshop)

SAT 14th DECEMBER EVENING OF ENTERTAINMENT 7pm

Calling all word game and crossword fans!

The new Barton Bendish quiz sheet is now available. There are 50 questions with answers all on a 'Drinks and Beverages' theme. This quiz will keep you entertained for

BARTON BENDISH AND EASTMOOR VILLAGE NEWS

hours and only costs £1! There is a prize of £15 for the winner. Names of correct entries (or those who have the highest number of correct answers) will be put 'into a hat' and the winner drawn in May. To get your sheet you can contact;

Mhari Blanchfield 01366 347 849 (Barton Bendish)

Linda Webster 01366 347563 (Barton Bendish)

Jill Mason 01366 347928 (Barton Bendish)

St Andrew's Church (Barton Bendish)

Ann Lewing 01366 328350 (Eastmoor)

Margaret Webster 01366 328888 (Beachamwell)

Debbie Fisher 01366 502224 (Boughton)

Lynda Eddy 01366 501308 (Wereham)

The Berney Arms 01366 347995 (Barton Bendish)

Post Office, (Fincham)

Quiz sheets are also available in St Andrews Church and at Barton Bendish fund raising events. Come and Join us at St Andrew's

Breakfast Church

In the Village Hall Barton Bendish On Sunday 7th April At 9.30am

Enjoy a full cooked breakfast A chance to enjoy the fellowship of others and get your Sunday off to a very good start!! Everyone very welcome, especially children, and those not comfortable with a formal service. For more details contact Linda 347563 or Mhari 347849

A Career as a Cold War Soldier

On 22nd February Lt Col (Ret'd) Ian Berchem gave an illustrated presentation at Barton Bendish village hall on a career as a Cold War soldier. The audience was treated to an entertaining and informative tour through his time as a Royal Engineer in a wide range of locations from Northern Ireland to Malaysia. Is he Barton's only Malay speaker?!! Thank you to Ian for an enjoyable evening, the proceeds of which went to St Andrew's church funds.

BEACHAMWELL, SHINGHAM & DRYMERE VILLAGE NEWS

St. Mary's Church

Yew Trees

The PCC has been discussing replacing the gates to the churchyard and has been told that it will not be possible to hang new gates because the yew trees either side of the gates have now grown too far across the entrance. We have looked at various options but as it is already impossible to open the gates completely and the problem will get worse we have, very regrettably, taken the decision to remove the two trees and replace them with young yew trees. This will give better access for weddings and funerals and enable us to replace the gates. Breckland Council have given us permission to remove the trees.

If you would like to discuss this matter you are welcome to come to the AGM of the PCC which is being held in the church on Tuesday 2nd April at 7.30 p.m. or contact either of the churchwardens.

Open Gardens Day 23rd June

We are now putting plans together for this year's Open Gardens' Day and would warmly welcome anyone who would like to open their garden this year. Our visitors enjoy walking round large and small gardens, wild gardens and formal gardens, sunny gardens and shady gardens and also "gardens in progress". So if you have any sort or size of garden and you would like to open it this year we will be very pleased indeed to hear from you.

We will also need a lot of help on the day itself and would welcome any assistance you can offer. There are a great many things that need to be done and we will be delighted to hear from you if you are able to offer your help.

John Sanderson 01366 328818 - jsh.sanderson@virgin.net or

Richard Wainer 01366 328706 - rwainer@dow.com

St Mary's Vestry Meeting and AGM

This will be held in the church on Tuesday 2nd April starting at 7.30 p.m. This is an open meeting and everyone is very welcome to attend. We would very much appreciate your views and any suggestions you may have on any topic that concerns the church.

Services for the Easter period will be displayed on various Notice boards in the village but you may like to know that St Mary's will be holding a service at 11.15 a.m. on Easter Sunday morning.

BEACHAMWELL, SHINGHAM & DRYMERE VILLAGE NEWS

We have five events for your diary and look forward to seeing you there:-

1. Saturday 27th April: Coffee Morning and Plant Sale at Orchard House, The Street, Beachamwell 10 a.m. – 12 noon to raise money to help fund the floral displays at the Festival of Flowers in July.
2. Sunday 5th May: Beachamwell Half-Marathon – Please support the Half-Marathon by either taking part, sponsoring a participant or coming to support the runners, walkers and cyclists when they set off from the Village Hall at 9 a.m.
3. Sunday 23rd June: Open Gardens Day - The Novinka! Folskaband musicians will be performing again both on the Village Green and in The Old Rectory Garden during the afternoon, Mike Walker will be giving Organ Recitals in the Church and there will be Ploughman's Lunches, Afternoon Teas, a Variety of Stalls, Raffle and Tombola and lots more to do and see.
4. Saturday 27th July and Sunday 28th July The Festival of Flowers: This year the event will be held in St Andrew's Church in Barton Bendish. Our first two joint Flower Festivals have been highly successful and we are hoping to have another enjoyable event in Barton Bendish this year. The theme is going to be "A Book Title". Fliers will be going to every home in Beachamwell and Barton Bendish soon after Easter which will give more details. The profits are divided equally each year between Beachamwell and Barton Bendish.
5. Friday 30th August: Wine and Cheese Evening at Park House, The Street Beachamwell. More details next month.

Don't forget our two regular monthly events –Scrabble on Wednesday 10th April from 2 – 4 p.m. at Orchard House, The Street, Beachamwell. (01366 328774) and Afternoon Tea and Cakes on Wednesday 17th April in Beachamwell Memorial Hall from 2 - 4 p.m.

Graham Williams (Churchwarden)

St. Mary's Flower & Brass Cleaning Rota

7th Sonia Williams; 14th Carole Wilson; 21st Brenda Branch; 28th Karen Butler & Jeanne Flynne

If anyone is interested in joining the Flower Rota please contact me and I will explain what is involved.

Eileen Powell

BEACHAMWELL, SHINGHAM & DRYMERE VILLAGE NEWS

WI

Following the business part of the meeting, Leah Spencer, Irma Fowler and Lesley Mardle entertained us with 'The 7 Ages of Women – Through Humorous Poetry' and they were



indeed very entertaining. Some of the poems made us reflect, some made us sad but some made us laugh lots.

Hopefully the weather will improve soon and Margaret Webster will be able to join us again. Quite a few members were unable to attend this time but those who made it had a very enjoyable

evening.

The flower of the month was won by Brenda who also came first in the competition. Raffle prizes were won by Maggie and Val.

Vesna read the thought for the month which had been provided by Eileen.

Don't let the mistakes of days gone by

Ruin the joys of today.

Bury the past and let it lie

In peace as you go on your way.

Life is too precious to waste in regret,

Time is too fleeting and swift

So live for the present, forgive and forget

And accept each new day as a gift.

Next WI meeting: 4th April, 'How the WI came to Sandringham' with Mrs. Maureen Rispin. Visitors most welcome.

Jenny Gabrielsen (Secretary)

BEACHAMWELL, SHINGHAM & DRYMERE VILLAGE NEWS

Wednesday Walkers

A group of 14 Wednesday Walkers set out from Beachamwell Memorial Hall in March for the monthly ramble round local footpaths. We were pleased to be



joined by Andy from Norfolk County Council Highways Department who works to maintain and protect public rights of way, and who has recently been putting up footpath signposts in Beachamwell and clearing obstructions. He explained that

Norfolk CC has a 5-year programme aimed at surveying all the rights of way in the county and it was very useful to be able to pick Andy's brains about footpath matters as we walked along. At the end of Long Drove we came to the highlight of the walk - a view of a well-preserved section of Bicham Ditch (aka Devil's Dyke). This Dark Age linear earthwork was probably built to mark the boundary of a local Anglo-Saxon tribe. With buzzards mewing overhead we made our way into the warren at the site of the old Sheep Gate. Noting Warren Barn in the distance, we passed by some earth banks, probably used by the warreners to trap the rabbits. Returning by way of Warren Belt our walk ended after a very pleasant two hours.

Next Wednesday Walk: 3rd April. Meet at Beachamwell Memorial Hall at 10.30am. All welcome; dogs on leads please.

Philip Spencer

Mobile Post Office

Monday, Tuesday, Wednesday, Thursday and Friday: 11.15 - 12.00

BEACHAMWELL, SHINGHAM & DRYMERE VILLAGE NEWS

Beachamwell Memorial Hall

AGM

The outgoing committee were thanked for all the work they did during that last year. A new committee was voted in and is made up of:-

Peter Garner (Chairman), Susie Davis (Secretary), Judith Blatchford (Treasurer), Jayne Frost, Caroline Sanderson, Leah Spencer and Mike Walker.

There will be a Village Fete meeting in the Memorial Hall on April 9th at 7.30. come along and share your ideas and opinions.

Peter Garner (Chairman)

Table Top Sale

This will take place on Sunday April 21st from 10am – 4pm in the Memorial Hall. Please come and bring your friends

Refreshments will be available and lots of bargains...

Mary Riches 01366 328999 and Sonia Sandell 01366 328441

Parish Council

If you would like to contact me and discuss any matter please feel free to do so by one of the following methods:-

- ◆ Twitter: @MikeNairn1
- ◆ Skype: Cllr.mikenairn (For Skype interviews email first or telephone.)
- ◆ Email: mike.nairn@btinternet.com
- ◆ Telephone: 01842 810212

Mike Nairn (District Councillor)

The Annual Parish Council Meeting and the Parish Council Meeting will be held in the Memorial Hall on Monday May 13th at 7.30. Everyone is welcome

Eileen Powell (Parish Clerk)

RIP

It was with great sadness that we learned of the deaths of two villagers in March - Diane Miller and Mike Bushby. Our condolences to their families.

COMMUNITY NOTICE BOARD

MOBILE LIBRARY VISITS - Please note changed days/times

| DATE | VILLAGE | LOCATION | TIME |
|------------|----------------|-------------------|----------|
| Thursday | Beachamwell | Post Office | 10:05 am |
| 11th April | Drymere | Telephone Box | 10:40 am |
| 9th May | Boughton | Sycamore House | 15:20 pm |
| | | Mill Road | 15:35 pm |
| | Barton Bendish | Hatherley Gardens | 9:40 pm |
| 11th April | Wereham | The Pond | 9:30 am |
| 25th April | | Queen's Close | 16:20 pm |

VILLAGE BUS SERVICES

| FROM | ROUTE | OPERATOR | DESTINATION |
|----------------|------------------------------------|----------------------------------|------------------------------------|
| Barton Bendish | 31 (Saturday) | Lewis Coaches | Swaffham |
| Beachamwell | 31 (Saturday) 18 (Tuesday) | Lewis Coaches Eagles Coaches | Swaffham King's Lynn & Swaffham |
| Boughton | 18 (Tuesday) | Eagles Coaches | King's Lynn & Swaffham |
| Wereham | 28 (Mon to Sat) 40 (Mon to Sat) | Coach Services Coach Services | King's Lynn Thetford/Downham |

Timetable requests:- (01603) 228888, Traveline (08706) 082608 (www.traveline.org.uk)

FARMERS' MARKETS

| | |
|------------|--|
| Ely | Second and Fourth Saturday 8:00-2:00pm |
| Fakenham | Fourth Saturday 8.30am to 12:00pm |
| RAF Marham | Third Friday 9:00am to 2:00pm |
| Swaffham | First and Third Sunday |
| Watton | Sadly no longer trading |

For information:- www.farmersmarkets.net or your local Tourist Information Office

VILLAGE AND PARISH HALL BOOKINGS

| | | |
|----------------|--------------------|--------------|
| Barton Bendish | Bill Tasker | 01366 347432 |
| Boughton | Pam Wakeling | 01366 500429 |
| Beachamwell | Caroline Sanderson | 01366 328244 |
| Wereham | Doreen Rolph | 01366 500218 |

CHURCH SERVICES

April 2013

| DATE | TIME | LOCATION | SERVICE |
|------------|----------|------------------|-----------------------------|
| 7th April | 09.30 am | Barton Bendish | Breakfast service |
| | 09.45 am | Shouldham | Morning Prayer |
| | 10.30 am | Marham | United Morning Service (HT) |
| | 11.00 am | Beachamwell | Holy Communion |
| | 6.00 pm | Wereham | Evensong |
| 14th April | 09.30 am | Shouldham Thorpe | Holy Communion |
| | 10.00 am | Boughton | Breakfast Church |
| | 10.30 am | Marham | United Morning Service (MC) |
| | 6.00 pm | Fincham | Evensong |
| 21st April | 09.45 am | Shouldham | Holy Communion |
| | 10.30 am | Marham | Holy Communion |
| | 11.00 am | Beachamwell | Family Service |
| | 11.00 am | Wereham | Holy Communion |
| 24th April | 09.30 am | Fincham | Holy Communion |
| | 10.30 am | Marham (MC) | Café church |
| | 11.00 am | Boughton | Holy Communion |
| | 6.00 pm | Barton Bendish | Holy Communion |

THURSDAY COMMUNIONS: no service on 4th April

11th, 25th at Fincham, 18th at Boughton. Services at 10:00 am followed by tea/coffee. All Welcome

Errors sometimes occur and last minute changes are sometimes necessary, so it's always best to check services.

CHURCHWARDENS

| | | |
|----------------|-------------------|--------------|
| Barton Bendish | Mhari Blanchfield | 01366 347849 |
| | Linda Webster | 01366 347563 |
| Beachamwell | John Sanderson | 01366 328818 |
| | Graham Williams | 01366 328774 |
| Boughton | Pam Wakeling | 01366 500429 |
| Wereham | Sheila Smith | 01366 858165 |

BAPTISMS AND WEDDINGS

Please contact the Revd. Barbara Burton or the Churchwarden in your parish.

BOUGHTON VILLAGE NEWS

All Saints' News It was good to see so many people in church for the Ash Wednesday service. This was the first time that such a service has been held in the morning, rather than in the evening, and it was obviously popular. There were more than twenty people there and the absentees were regular attenders who were either ill or away, so I hope we do it again.

Breakfast Church also had fewer of the usual Boughton people, as some were away, but the numbers were made up by visitors from Denver, Bexwell and Tilney, who had come to see how it works before trying it in their own churches. Thanks to Sandy and her team, the morning was a great success, with good food, good company and a good (short) talk from Barbara. The singing was good, too! If you haven't tried Breakfast Church, come along and do so—just ring Sandy on 500743 so that she can get the numbers right.

Many of you will have noticed that the East Window has been restored to its rightful place. It looks beautiful and the extra light is much appreciated. Most of the money was raised by grants and we ought to mention in particular The Norfolk Historic Churches Trust. Every year I look for people to cycle and to sit in the church to raise money and this year we have benefitted from the fund. Please consider cycling in September when that comes round. There is also another radiator in church—not a new one, but the radiator which was moved when the vestry door was altered. It will offer welcome extra heat, although it indirectly caused us problems when installed. Because we had no heating for an important meeting of churchwardens and treasurers from the eight parishes, we had borrowed heaters from Fincham. Fine—but after about ten minutes the power failed completely and we had to conduct our meeting in candlelight. Many thanks to those who met the situation with good humour. We discovered the following day that the fuse had been inadequate and a larger one was needed. Thanks to David Harrison, the electrician, for coming out so promptly.

Please remember that our Open Gardens Day will be on Sunday June 9th. If you are able to open your garden or help in any way on the day, please contact me. There will be a plant stall as usual, teas and lunches in the church/community centre and anything else that people come up with! I'm still collecting tombola prizes for the Spring Fayre at Fincham on May 4th, and cakes and plants would also be gratefully received. This is to raise money for the group of eight parishes and support our overworked vicar, Barbara.

Pam Wakeling

Boughton Village Caravan Coastal Walk On Sunday 17th February Mark and Sue Pogmore hosted the annual Boughton Village Caravan coastal walk. This year around 30 of us gathered at 'The Hero' public house at Burnham Overby to commence our 6 mile walk at 10:00am. After the long cold winter we have so far had the appearance of a

BOUGHTON VILLAGE NEWS

cloud free sky and sunshine was very welcome. We had an extremely pleasant walk through the surrounding countryside and salt marshes, although the latter provided a challenge as there were numerous deep puddles and muddy tracks hindering our progress. However, the youth of Boughton seemed to cope much better than the older fraternity and unsurprisingly seemed to enjoy getting wet and muddy!! A short refreshment stop halfway round recharged our energy stores to assist us for the return leg to 'The Hero' for a well deserved lunchtime drink and dinner. Thanks as usual to Mark and Sue for arranging the event and to all of those who joined us. We hope you all enjoyed it as much as we did. *The Boughton village Caravan*

Coffee morning We combined our monthly village coffee morning with a cafe cluster organised by the Norfolk Association of Local Councils - a chance for local councillors to meet. A healthy turnout, including Borough Councillor Colin Sampson, enjoyed a chat over coffee and home made treats, in what we now know as All Saints Village Centre. A collection and raffle raised a useful £160 for village funds.

Later a small group left to walk the specially constructed pathway through Boughton Fen, an area now managed by Boughton Parish Council Fen Committee and benefiting from grants provided by Natural England and the Big Lottery Fund. We were guided by Fen Chairman Mark Pogmore, and acclaimed local naturalist Allan Hale. We learnt about the ongoing work to suppress the scrub, which would otherwise take over the precious reedbeds: this is primarily a wetland. We heard about the birds to be seen and heard at various times of the year: it was thrilling to hear that the Fen has two pairs of Nightingales, a bird with declining numbers in the UK. We bumped into two contractors, who were taking their lunch round a bonfire, not an ordinary bonfire, but one on a bed of corrugated iron, so the excess potash can be later removed. We saw the explanatory signs erected at various points along the marked trail, telling us what to look out for. Altogether a most enjoyable and enlightening excursion, despite the boardwalk needing to be extended in a few boggy places! *Paul Coulten*

The next coffee morning will be on Saturday 6th April.

Local history: Having seen the Boughton History Pages on our local website www.group4news.co.uk, Paul Rix, one time Parishoner, returned to Boughton and recalled his childhood memories of village life in the 1950's. The following notes are what he left with Frank Reid and Kevin Fisher and we hope it stimulates interest to villagers past and present. If anyone else has any memories, photographs or information of any kind that they would like to share please contact Kevin on 01366 502224

BOUGHTON VILLAGE NEWS

Memories of Childhood in Boughton (circa mid 1950's) – Paul Rix Part 3

Then there were apples! Miss Quadling's 'Beauty of Bath' tree was our number one target, it was always the first to be ready. We always got caught by P.C. Westwood who would be there near the hole in the hedge when we tried to sneak out laden with our loot. Eventually I asked him how he always knew, I can still remember his reply, "the tree was older than he was and he grew up nearby".

We also used to help with apple picking in the large orchard on R.G.'s farm, most of the pickers were ladies, many from other villages. Then they all had to be graded and packed, this was done in the large barn [now a converted home]. These were Bramley apples, all the best were individually wrapped and packed into wooden crates, branded R.G.Robinson and Sons, Boughton. Before these crates could be used they needed soaking, the empty crates were stacked on a four wheel cart, pulled by a horse to the pond and pushed off into the water, the previous load would be retrieved, stacked on the trailer and taken to the barn ready to use. Once full the boxes were stacked on the Commer lorry and taken to a cold store on the farm of R.G.'s brother at Terrington, driven by Ted Smith. I'll bet that by today's standards that old lorry was way overloaded. Any broken boxes were repaired by 'Click' and 'Wilker' the two carpenters on the farm, life was much more leisurely then.

The times changed very quickly, spraying the orchard was done by hand lances, fed by a network of pipes. Richard's mum [Annie] was one of the main spraying operators, it was heavy work dragging those hoses around. It was a wonder they weren't poisoned! The network was primed by a pump in a shed halfway along the top of the orchard, this was kept primed by Claude Chapman and fixed by Dad when it broke. Scattered through the orchard were pig huts, a couple of large ones, each with a group of little huts with single sows in them. Mucking out these little ones was simply by chucking it out of a small shutter at the back, these small heaps were a mecca for bait hunting for kiddies off on a fishing trip, they were full of Brandlings. One job we helped with was clearing up the prunings, have bonfires with the twigs and stacking the thicker branches for firewood. With the advent of tractors, a Dexta was assigned to the orchard, a rotary cutter went with it to cut the grass, it was also used to cut the Churchyard, many of the old grave stones were moved to the edge of the graveyard to make it easier to cut. A power sprayer was also purchased, it blew a high pressure mist out of a bank of nozzles on one side only, I believe this was one of the first in the country. The tractor for the orchard had smaller wheels to get under the trees, Ted Smith guarded this as though it was his own.

Again, I've got ahead of myself, harvest was a job for binders, horse drawn, driven by gears on the wheels. Then the tractors took over. Wheat sheaves were too heavy for us 'littl'uns' but we managed barley in spite of the 'barley harnes'. Of course this meant

BOUGHTON VILLAGE NEWS

stacks and then thrashing tackle, who could forget Dick Brown's threshing 'train' rumbling and puffing up from Stoke Ferry, all on iron wheels! The threshing machine, dresser, chaff cutter, buncher and elevator. The last time I can remember seeing such a collection working it was driven by a field marshal tractor, a strange single cylinder machine known as 'Popeye'. Staff Proctor had one. Noisy smoky things, but less likely to set fire to the stacks than a traction engine. Another favourite pastime was chasing the rats between these machines driven by flailing belts, if we had a good haul R.G. would give us sixpence, even a shilling on a good day! Our 'battle ground' was the grass field at the bottom of Johnny [Spindle] Carters, now I mourn its' demise. It was a carpet of wild flowers growing over all the humps and bumps, more of this later. Looking back, life was simple then, full of fun, just as childhood should be. Most households grew their own vegetables, kept a few chickens, some even an odd pig, Life was good but now I realise it must also have been damned hard for our parents to make ends meet. School was more than learning the alphabet or times tables, lessons under the double red hawthorn on the green, ducks quacking among us. Patch, the smelly old dog belonging to Miss Handbury, getting too close to the fire in winter. Miss Flint looked after the infants in the 'little room'. My first teacher was Miss Stebbings who left to get married. I didn't hear anything about her for many years. In 2003 I had my first book published, there was a piece in the newspaper about it. I received a letter from a Mrs. Simpson [Miss Stebbings]. That was one of the nicest things in my life, that my first teacher still remembered 'little ol' me'.

I gradually got to know the Paynes and we became friends, indeed Mike was best man at my first wedding. There was a big advantage in being friends with them, the Holy Grail to us kids was 'the wood'. To get there without being seen by Wilf Goodall, the Foreman and Gamekeeper on the farm, we had to make a wide detour to the south side of the wood, now I could go via Fen Road, much easier. Even at about ten years old I would be given the .410 and a couple of cartridges, 'go get tomorrow's dinner'. As long as I asked and stuck to the no pheasant or partridge rules, Mr Payne would say yes and point me in the direction of the most rabbits. You soon learned to shoot straight.

Back to the early years, life centred around what was happening on the farms, potato picking, all done by hand into baskets, tipped into two wheeled 'tumbrels' pulled by a strong horse, tipped into long heaps called 'hales', covered with straw then a layer of soil. Then the cold job of riddling them later, into bags and off to market. Sugar beet 'chopped out' by hand to the right spacing, squeezed out of the ground when ready by a heavy 'sledge' pulled by two heavy horses. Topped and cleaned by hand, left in small heaps to be collected into tumbrels and tipped on the headland to be loaded onto the lorry before being taken to the factory. It kept Ted 'Fruity' Smith busy! How the advent of machines has changed things. I can just remember hay being stacked on frames [Stooks] to dry it thoroughly, there was a bit more to it than that, as well as the hay there were two types

BOUGHTON VILLAGE NEWS

grown for seed, timothy grass and cocksfoot. I can remember helping throw it into the front of the combine to 'thrash' it. Another labour intensive activity was stone picking, tons of often large flints were picked and carted off the fields below the orchard to make up the farm tracks and foundations of 'muck' and beet pads, which are still there today.

Village Characters.....Stafford Proctor lived alone in the big farmhouse beside the farm with his gundogs, probably best remembered for washing his 'paunches' for the dogs to eat! A stout man with a red face, liked to be seen as a 'Country Gent'. He moved in later years to the former stockman's house [Horseman's Cottage] at the west end of the village. The dominating character in the village was Ali Greenacre, us lads were terrified of him. He lived in a ramshackle old caravan beside Fen Road, in the corner of the main farm yard. Piercing blue eyes, a large hooked nose with a permanent drip, tattoos and an old trilby hat. My enduring image of Ali was standing on top of the threshing machine in his leather waistcoat, cutting the strings on the sheaves being pitched to him by two men with pitchforks. Ali cussing and urging them to work harder, yet still having the time to throw his spare knife, killing a rat we'd missed! 'Have I got to do the work of you damned kids as well', he boomed. I was petrified! I have no idea where he came from, I presume he died when I was young, although he might have moved, he simply wasn't around anymore. Charlie Rix, universally known as Charlie 'Huh' as this was his usual response to any comment. He kept himself to himself but was fine with us kids, he even gave us a double white lilac bush to plant in the school garden. He lived next to the school, I will always remember his luxuriant white moustache, stained with nicotine in the middle. There were of course many others, proud men, Arthur Cooper, David's uncle, the gamekeeper on a farm in Oxborough. Edward [Ted] Rix, Ernest Rix to name but a few. Then there was old Mrs.Seymore, mother to 'Lenny' stockman for a couple of outlying 'crewe' yards on Robinson's farm, known as Sharpes and Sampsonssheds respectively. Her grandsons are two of the famous 'Strollers', the area's top group for a generation. Another of the characters was Alfred Rix, the oldest of four sons and a son of May and 'Hinny' Rix. Alfred was the foreman on Robinson's farm. All I can ever remember him doing was his daily rounds of all the sheds on the farm to feed the numerous cats! Only one or two would allow us youngsters to approach them and rarely stroke them. Some would even stand their ground, hiss and spit, even scratch and bite if we were daft enough to give them their chance. Yet to Alfred, they were as docile as cats can be. He did his rounds on a light cart pulled by a small horse, not big enough to work properly, her name was Peggy.

The community experienced it's share of disasters, two bouts of fowl pest. After the second infection Jack Proctor, Mr. Ambrose and many who had kept just a few hens never did restock. I still remember my tame Rhode Island Red had to go, along with all the others. It changed the face of the village, as did 'Foot and Mouth', the place stunk of

BOUGHTON VILLAGE NEWS

the funeral pyres for a couple of week. Miller's never did replace their dairy herd. Terrible times, along with tractors, electricity, tap water, changes indeed! As Charlie 'Huh' was heard to observe, 'no good will come of it!' Robert 'Poof' Carter, from the poorest family in the village was killed falling out a trailer when I was about twelve, I suppose that was when I realised I wasn't immortal. I had discovered Mr Stannard [Horry's Dad] laying in his potato patch when I was little, he looked so peaceful. He loved his garden, next to ours. So death wasn't totally new to me, but 'Poofs' death subdued all of us. *To be continued.....*

Boughton Parish Footpath Signs You may have noticed that the main footpath indicators around the village have recently been refurbished, and you'd be right! For some time now the issue of the condition of the signs has been of concern to the Parish Council as although they were receiving annual preservative treatments, at least one was badly rotting and on the lean and the others were getting very tired.

We have Parish Councillors, together with parishioner Ollie Robinson to thank for their sterling efforts in re-furbishing the signs and bringing them to a standard that will proudly point you along our relatively well used village footpaths for many years to come. For those of you who use the footpath between Cavenham Corner and the Church you will also have noticed two modest new signs erected next to the footpath indicators directing you to the above locations. They sit very well with the village streetscape and were also erected by the above team recently. These were sourced by Councillor Golly Cooper at no cost to the Parish. It is good to see the community spirit alive and well in Boughton, coming together for the good of the village. We hope you will continue to use the footpaths regularly, enjoying our beautiful countryside and keep alive a tradition that goes back hundreds of years. ***Boughton Parish Council***

Boughton Cricket Club

GET INVOLVED, COME AND JOIN US....



Welcome to Boughton Village Cricket Club, an up and coming small, locally run cricket club which plays its home matches at its own Boughton Cricket Club ground, a short distance from the village centre. The club plays friendly, social cricket on Sunday afternoons throughout the summer months.

If you have any comments, are interested in playing for the club, or even just keen to come along for an afternoon in the sun to watch village cricket, please feel free to contact Steve Short For further details email: theoldstablesboughton@btinternet.com Joining

Boughton Cricket Club couldn't be easier. As a rule we're on the look out for all kinds of players: batters, bowlers, enthusiasts - whatever you care to describe yourself as.

BOUGHTON VILLAGE NEWS

Boughton Cricket Club - Winter update I know many of you will not normally be thinking of cricket at this time of year with snow and frost still on the ground and puddles everywhere but here at Boughton Cricket Club we are busy planning and preparing for our next summer season already. Our first fixture is in early May which isn't in fact many weeks away now. It will be an away match as we try to stay away from our wicket in the early season as it needs a little longer to dry out on our heavy soil than some of our rival's field's. Barry Ovel, our groundsman, has done a fantastic job over last season and in the autumn in managing the square and outfield and keeping it in best possible condition for playing on using the new equipment which we purchased with the aid of our Sport England grant last year.



We have an enthusiastic and loyal following of players but are always on the lookout for more players, helpers and social members to enable to club to flourish and progress in the years to come. There are no special criteria for joining only that you have to enjoy playing or watching cricket and maybe want to have a bit of competitive fun with a great bunch of people. We pride ourselves on having a very diverse range of ages and abilities and whether or not you have played recently or not doesn't matter, we have regular net bunch of people. We pride ourselves on having a very diverse range of ages and abilities and whether or not you have played recently or not doesn't matter, we have regular net sessions during the season and you can brush up on your technique or learn more during those with some qualified coaches and there is loads of free advice on offer from some of those with lots of experience. Also we have our own very good equipment for you to borrow so all you need is a pair of trainers!! We will post the fixtures and net sessions in G4 News once all the dates are fixed but in the meantime please contact me on 07768 807534 or email theoldstablesboughton@btinternet.com

if you are interested in joining or coming along just for look-you will be most welcome or if you know someone locally that might be interested please let them know-there are no geographical barriers to membership, you don't have to live in the G4 area.

Also look out for news of our fund raising events- One of our members Jon Allen has arranged a four day cycle ride from the home of cricket, Broadhalfpenny Down in Hampshire back to Boughton over the Easter weekend and I will be running in the Kings Lynn GEAR 10k run in May so any sponsorship you can give us in those event would be most appreciated.

I hope to see you over the season and let's hope for some good cricket weather in 2013 and a successful season for Boughton Cricket Club. *Steve Short Chairman*

WEREHAM VILLAGE NEWS

Wereham on Facebook To find out what's going on in the village and look at local and event pictures log into Facebook we are **Wereham Village Group**

Parish Council Meetings: The last meeting was held on Tuesday 12th March

. If you would like a copy of the Minutes from that meeting, please contact:-

Mrs N E Clifford-Everett (Parish Clerk)

33 Lynn Road

Southery

Downham Market

PE38 0HU

01366 377799

The next meeting is Tuesday 14th May at 7.30 pm. All welcome.

Wereham Playing Field Please note that dogs are **no longer allowed** on the Village Playing Field. *Wereham Parish Council*

Please, also clean up after your dog when you are walking around the village.

First Aid Course Will be put on hold until more people are interested. Please ring for details. Angela on 01366 500115.

Wereham Open Gardens on Sunday June 16th

Hopefully when you read this the worst of the winter will be over and Spring will be springing! If you are thinking of opening your garden this year for a first time I would be pleased to chat to you about it. We are not looking for 'show gardens'.

Our visitors enjoy wandering around the gardens, getting ideas, looking at the plants and chatting with the owners. Finally, ending the afternoon with a cup of tea and a cake on hopefully, a sunny Sunday summer afternoon.

This will be our 11th year of Open Gardens and last year we raised over £1000 for church funds which is tremendous and was our best yet! We also serve salad lunches and afternoon teas. If you feel you would like to help with either of these by baking a cake, helping to prepare and serve or in any other way please contact me.

I am grateful for any help that you may wish to offer either on the day or before the event.

Looking forward to hearing from you!! *Lizzie Baddock 01366 500233*

Wereham Tots_ Friday mornings from 10.00am to 12.00 noon. All welcome. We will re-open after Easter, on Friday 5th April. *Angela*

Delivery of G4N We're unable to continue delivering the booklets for much longer. I need someone to take over in April. Volunteers please contact me.

Chris Ward 01366 500005

Village Hall Committee Meeting Tue 26th Feb update. Another positive Committee Meeting was held in the Village Hall on Tuesday 26th Feb. Various members of the Village have taken up roles within the Committee, it was lovely to see everyone enthusiastic and upbeat about the journey ahead and the strong possibility of being within a few years away of having a new Village Hall. New tables and upholstered chairs are due in Mid-March, adding to the new double oven and larder fridge that we have recently received.

The year ahead brings us new and exciting challenges, and we are still looking for enthusiastic people to be part of "Friends of Wereham Village Hall", which along with "Trustees" help fund-raise - but having a great time along the way. If you are aged between 16 and 101, live within the local area, have a few hours a month to spare this could be YOUR calling. Just contact **Jacqueline on 500880 or Victoria on 501277** or pop over to the Village Hall.

Barbara Roberts.



After 16 years - Barbara has decided to retire from the running the Bingo at the village hall.

This marvellous lady and her small army of helpers, from Wereham & other villages (particularly Janet Voutt & Doreen Rolph) have raised thousands of pounds for the village hall over the years and provided a place for people to socialise on a regular basis. For this, I'm sure you will join us in saying a massive, and heart-felt thank-you.

Thank you Barbara!

Barbara would like to say thank you to everyone who has supported her over the last 16years.

With that in mind - and with lots of advice from Barbara we are going to stage an **EASTER BINGO** in the Hall on Wednesday 27th March....EYES DOWN AT 7.30... Its the beginning of Easter so please, please support our Hall and have a fun time along the way. Donations of raffle prizes greatly appreciated. For further details please contact either

Angela on 500115 or Diane on 500798

Ink Jet Cartridges - we're converting ink cartridges into funds for the village hall. Please either pop them into the collection boxes in the village hall or pass to either a member of 'Friends of Wereham Village Hall' or a committee member. Alternatively, I'll pop round to pick them up. *Victoria 501277*

AGM For the Wereham Village Hall Committee - is set for Apr 9th at 18:00 hrs - all residents over the age of 18 are encouraged & welcome to attend.
Jacqueline Butcher Secretary - on behalf of the Village Hall Committee.

Update from the New Build Team

We are all now Trustees and are in the process of registering with the Charity Commission. During March, we'll be starting our fact finding visits to other village halls. We'll also be opening discussions with funders and liaising with the NRCC for guidance to move our project forward.

In a few months, we'll be inviting you to be part of the process, enabling you to say what you need in the new village hall - get your thinking caps on!

We'll keep you up to date on our progress.

Helen Richardson & Victoria Gray - New Build Team, Wereham Village Hall.

Wereham Village Hall Bonus Ball Club - An Invitation to Join

Wereham Village Hall Committee and 'Friends of Wereham' Volunteer group raise valuable funds every year for the running of Wereham Village Hall. Money raised is used to maintain the hall for the benefit of all users. By joining the Bonus Ball Club you can help ensure Wereham Village Hall remains open as a resource for all the residents in our community; as well as having a chance to win a cash prize every month of up to £50! The Wereham Village Hall Bonus Ball Club is a private lottery and is open to all residents from Wereham Village and the surrounding area, their family and friends. As a private lottery you have to be invited to join and you must be 18 or over. You will be allocated one Bonus Ball number or more if you wish, your number is not transferable. Each month there is a draw for 50% of the income which is given to one lucky winner. We would prefer for you to pay in advance but if not money can be collected mid-month every month (£2 per number per month). Draws will be on the 1st Saturday from the main televised lottery draw 'Lotto'. Once all of the 49 Bonus Ball numbers are purchased the first amount will be collected and you will be advised of the date of the first Bonus Ball draw. Winners will be contacted personally and names will be posted on the Wereham Village notice board and in G4 news and its website. Registers will be kept recording the name and address of each member, the number(s) allocated to them and the subscriptions received from them. So get in quick to pick your lucky number or numbers

WILLIAM SHAKESPEARE

William Shakespeare was born in Stratford-upon-Avon in Warwickshire and was baptised on **26 April 1564**. His father was a glovemaker and wool merchant and his mother, Mary Arden, the daughter of a well-to-do local landowner. Shakespeare was probably educated in Stratford's grammar school. The next event in Shakespeare's life for which there is documentary evidence is his marriage in 1582 to Anne Hathaway, daughter of a farmer. The couple had a daughter the following year and twins in 1585. Nothing more is documented until 1592, when Shakespeare was in London and already working in the theatre.

Shakespeare's acting career was spent with the Lord Chamberlain's Company, which was renamed the King's Company in 1603 when James succeeded to the throne. Among the actors in the group was the famous Richard Burbage. The partnership acquired interests in two theatres in the Southwark area of London, near the banks of the Thames - the Globe and the Blackfriars.

Shakespeare's poetry was published before his plays, with two poems appearing in 1593 and 1594, dedicated to his patron the Earl of Southampton. Most of Shakespeare's sonnets were probably written at this time as well. Records of Shakespeare's plays begin to appear in 1594, and he produced roughly two a year until around 1611. His earliest plays include 'Henry VI' and 'Titus Andronicus'. 'A Midsummer Night's Dream', 'The

Merchant of Venice' and 'Richard II' all date from the mid to late 1590s. Some of his most famous tragedies were written in the early 1600s including 'Hamlet', 'Othello', 'King Lear' and 'Macbeth'. His late plays, often known as the Romances, date from 1608 onwards and include 'The Tempest'.

Shakespeare spent the last five years of his life in Stratford, by now a wealthy man. He died on **23 April 1616** and was buried in Holy Trinity Church in Stratford. The first collected edition of his works was published in 1623 and is known as 'the First Folio'.

Absence from those we love is
self from self—a deadly
banishment.

William Shakespeare



West Norfolk BIG SWITCH AND SAVE

- West Norfolk's Big Switch and Save could help you save money on your energy bills
- Register for free and without obligation and we could find you a great deal
- We'll tell you how much you could save and you decide whether to make the final switch

CHEAPER ENERGY BY PEOPLE POWER!

The more households who join, the stronger the bargaining power to drive down individual energy bills - those who switch together save together!

Visit www.bigswitchandsave.co.uk to sign up

Signing up is quickest online, however residents of West Norfolk without access to the Internet can call 01553 616200 for assistance.

borough Council of King's Lynn & West Norfolk

big community switch

JET ACCOUNTANCY & BOOKKEEPING SERVICES

Professional and qualified service offering:

- ◆ Accounts
- ◆ Bookkeeping
- ◆ Self Assessment
- ◆ VAT Returns
- ◆ Payroll
- ◆ CIS Returns

Tel: Louise Scott (MAAT)

07806 792211

info@jetaccountancy.co.uk

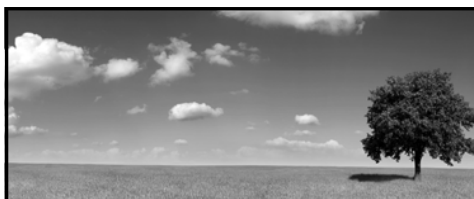
M.M.A. BOOK-KEEPING AND ACCOUNTANCY

Chartered Management Accountant

- ❖ Tax Returns
- ❖ VAT Returns
- ❖ Self Build VAT Claims
- ❖ Monthly Management Accounts Preparation
- ❖ Sage, Excel and Manual Systems Advice
- ❖ Computerisation of Records
- ❖ Home/On Site Visits Available

Call Keith Matthews (ACMA)

01366 347848 / 07818 438066



ktdesign

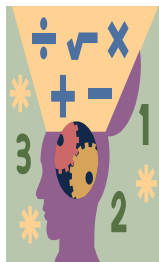
graphic design
web design
print
photography
illustration



www.ktdesign-web.co.uk

01366 501509

info@ktdesign-web.co.uk



Maths Tutor (to GCSE level)

- unravel problems
- boost confidence
- improve numeracy

A Cambridge graduate offers one-to-one tuition in your home
(one-off or ongoing)

£25 per hour

**For details, or to arrange a
£10 INTRODUCTORY SESSION**

**contact Katherine Shaw
07773 - 433180**

Cognitive Behaviour Therapy, Counselling and EMDR

Do you suffer from:

- Anxiety
- Depression
- PTSD
- OCD
- Phobias
- Relationship Difficulties
- Self Esteem Problems
- Problems At Work
- Lack Of Direction
- Addictions



Then Cognitive behaviour therapy or EMDR may help. Both are recognised as successful treatments by the NHS

For more information or an appointment contact:

Rebecca Judge RNMH, BSc, MSc, MAREBT, BABCP

EMDR & Psychotherapist on:

Tel: 01366 320782 Mob: 07530 928070

Email: enquiries@cbtnorfolk.co.uk

Web: www.cbtnorfolk.co.uk

'The Wish' Hair & Beauty

Designed for you! The Client.

Priced for you! The Client.

We offer the finest service in

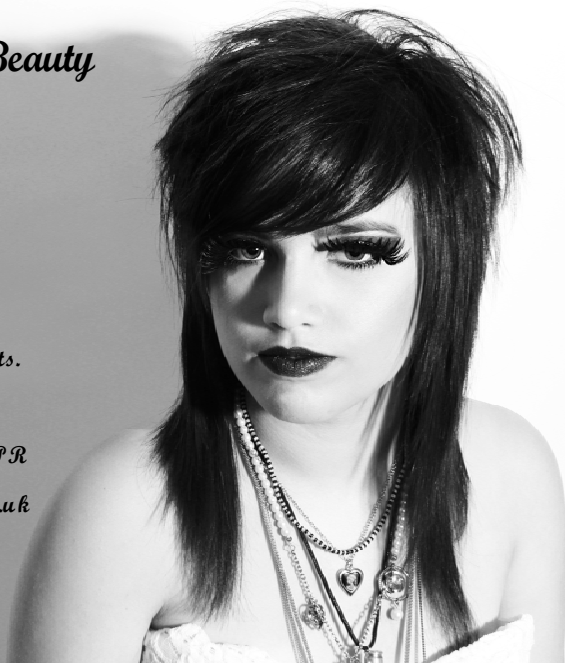
Hair Design, Beauty Treatments,

Nail Treatments, Holistic Treatments.

83 Lynn Rd, King's Lynn, PE30 4PR

01553-769891 www.thewishsalon.co.uk

As seen in Vogue magazine



CRYSTAL HEALING THERAPY & REIKI

*Complementary Therapies
that can enhance your life –
why put up with that pain
or stress?*

**Both therapies can assist
in reducing pain, the side
effects of medication &
improving everyday life.**



Advice or
Home Visits:
07769662697

To book an appointment:
Downham Market
Complementary Health Clinic
93 Lynn Road. PE38 9QE
(01366) 383840

Karen Taylor is a Practitioner member of PaCT
www.crystaltherapists.org.uk

Charlotte Rose LicAc, VTCT

Aromatherapy Massage
Acupuncture
Facial Cosmetic Acupuncture
Acupuncture for Pain
Hot Stone Massage
**Clinics in Wereham and Old Red
Lion, Castle Acre**
20 minutes aromatherapy
massage taster £5
Gift vouchers available

Contact: Charlotte: 07855 513199
01366 501232

charlotterose.charlotterose@gmail.com

www.charlotte-acupuncture.co.uk



Physiotherapy

**Do you suffer from pain, immobility or
joint problems? You could benefit from
Physiotherapy.**

I am a State Registered Physiotherapist with over 9 years
NHS experience in treating problems such as Arthritis,
Osteoporosis, joint pain, poor balance, joint replacement
recovery, fractured/broken bones, walking difficulties, falls
and neurological conditions such as Stroke, Parkinson's
and Multiple Sclerosis.

I can help to maintain and / or improve your quality of life
through regular physiotherapy; with short and long-term
treatment plans provided.

Please call for more information and to discuss your
particular needs and treatment options.

Available evenings and weekends for treatment in your
own home.

Michael Cooper BSc, MSc, MCSP
(Member of the Chartered Society of Physiotherapy)

Tel: 01366 500527

ART CLASSES

IN OXBOROUGH



For those who want to try painting for the
first time, or improve your skills in oils and
acrylic, come and enjoy a morning
or afternoon in my art studio.

If you have never picked up a brush
before, here is your opportunity to try.
The studio is open most days for morning
and afternoon sessions. All materials,
equipment, refreshments are included in
the course fee.

Come and enjoy yourself, and if you would
like further details please give me a call
on 01366 328874 or
email: enquiries@colinmasonfineart.com



**All abilities
welcome**

**Stretching,
postures and
breathing help to
improve mobility
and strength.**

**Please wear
loose clothing
and bring a
warm rug and/
or yoga mat**

British Wheel of
Yoga Tutor,
Ann Lewing
Contact number:
01366 328350

**STOKE
FERRY
VILLAGE
HALL**

Mondays
7.00pm—8.30pm
Please arrive no
later than 6.55pm

£5.00 per session
(pay as you go)
Under 18 yrs old must
be accompanied by an
adult

Michelle's Foot Care

Day, Evening & Saturday Appointments
Home Visiting

FOOT HEALTH PRACTITIONER

07723 427844

01760 755314

Corns – Callous – Verruca - Ingrown Nails
Thickened Nails - Fungal Nails - Diabetic
Trained – Many other Foot Problems

Fully Insured

Qualified: MCFHP MAFHP

Enhanced CRB

All instruments sterilized

*Registered Member of the British Association
of Foot Health Professionals*

Your local health food store & natural therapy centre

- Gluten free, vegan and sugar free foods
- Nuts, grains, seeds and cereals
- Quality vitamins & supplements
- Full range of Ecover cleaning products
- Natural bodycare and babycare sections
- Full range of treatments from Acupuncture to Homoeopathy in our natural therapy centre

Everything you need for healthy living!



Montpelier House, Market Place, Swaffham, tel. **01760 724704**

www.green-parrot.co.uk

NO MEAN FEET

CENTRAL TO THE GROUP 4 AREA
FOOT CARE IN YOUR OWN HOME



- ✓ **Nail Cutting**
- ✓ **Corns Removed**
- ✓ **Hard & Dry Skin Removal**
- ✓ **Cracked Heels Treated**
- ✓ **Callous Reduced**
- ✓ **Verrucae Management**
- ✓ **Ingrowing Toenails**
- ✓ **Infection Management Discussed**
- ✓ **Advice and Care for Clients with Diabetes**

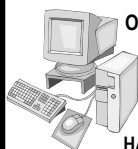
Evening, Daytime and Weekend Appointments Available.

As you would expect, each and every client is treated with a sterilised set of instruments and full insurance is in place.

For The Best Feet In The Street

Call Steve on 07837 506 906

Steve Jones MBE, SAC Dip (Adv.), FHP, FHPP, FHPT
Member, The Volitional Register of Foot Care Practitioners.
Member, The Alliance of Private Sector Practitioners.



SYSTEMS BUILT TO SPECIFICATION
MOTHERBOARD REPAIR
OPERATING SYSTEMS INSTALLED OR
RE-INSTALLED
WEB DESIGN / AD DESIGN
VIRUS REMOVAL
HARDWARE INSTALLATION & REMOVAL
LAPTOP & PC REPAIR

PC REPAIRS + UPGRADES

I AM BASED AT COCKLEY CLEY & WILL TRAVEL
FREE OF CHARGE WITHIN 15 MILE RADIUS
FREE PC COLLECTION-RETURN SERVICE

E-MAIL: pc-probs@hotmail.com

TEL-01760-725647

ASK FOR IAN



THE TEKKIE

PC AND NETWORK ENGINEER

- PC repairs & upgrades.
- Viruses & malware removed.
- Internet problems resolved.
- Wireless Networking.
- Data recovery.
- Quality PCs built to order.
- Microsoft systems specialist.
- On-site support.

Call: Joe Trattle 01366 347304 or 07760 118804

Web: <http://www.thetekkie.co.uk>

Email: joe@thetekkie.co.uk

Microsoft
CERTIFIED
Systems Engineer



PR Bowers & Son

Funeral Directors (Est 1921)

Anmer Cottage Methwold Road Northwold IP26 5LN

01366 727432

07796 780270

Private Chapels of Rest ~ 24 Hour Service
Upholding Traditional Family Values Of
Dignity & Respect For Your Loved Ones



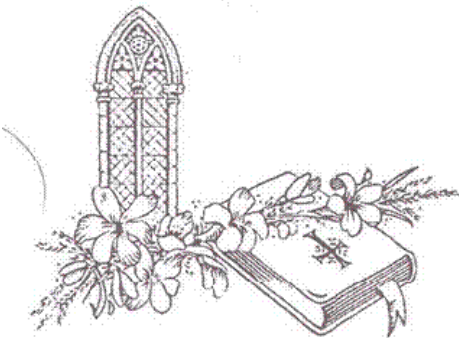
Privileged To Serve Families In The Area For 3 Generations

Family Funeral Directors ***R. H. BOND*** ***STOKE FERRY***

Formerly G.P. Riches & Son
Still family owned and now run by the
5th Generation
Est. 1872

Offering a Complete Funeral Service
24 hours a day, to all areas

Salisbury House
Lynn Rd
Stoke Ferry
PE33 9SW
Tel: 01366 500241
Mobile: 07861 671325



Help and
understanding
when you need it
most

WJA TILING

The Complete Wall and Floor Service

Ceramics, Porcelain, Mosaic
and Natural Stone
Under floor heating and Karndean

No job too big or small
All Work Guaranteed
15 years experience

For a free quote, measure up
or advice
Phone Will on: 07884 446257

NORTHWOLD TILE CENTRE

Retailers of wall & floor tiles



Established 23 years
Expert fixing service

SPECIAL OFFERS ALWAYS
AVAILABLE ON SELECTED TILES

Opening times:
Mon - Fri 9am - 1pm, 2.15pm - 5pm
Sat: 9am - 5pm, Sun - Closed
The Old Chapel, High Street,
Northwold, Thetford, IP26 5NF.

Tel/Fax: 01366 728325

NEW for 2011
MULTI-FUEL/WOODBURNING
STOVES



HETAS Registered
Solid Fuel, Gas & Oil Heating Systems
Solar & Bathrooms
Service & Repairs

01553 763589

07824 819015

info@heatsync.co.uk

www.heatsync.co.uk

BRYAN CATER Chimney Sweep

Guild of Master Sweeps certified

Clean and Reliable

Certificates Issued

Fully Insured

Fire Parts Supplied and Fitted

Call Gavin on

01366 728342

The Poplars, Thetford Rd,
Northwold, Thetford, Norfolk



Peckhams Plumbing

**John Peckham Friendly local
Plumbing and heating
engineer**



**All Work
Undertaken
Big Or Small**

**Fully Qualified
and
Insured**

**No Estimates
Just 1 Price**



**No Call
Out Fees**

- ✓ **Full Heating Systems**
- ✓ **Heating system updates**
 - ✓ **Radiator changes**
 - ✓ **Oil Tank changes**
- ✓ **Fully Fitted Bathrooms**
- ✓ **Leaks And Repairs**
 - ✓ **Tilling**
- ✓ **Boiler replacements & repairs**
 - ✓ **Boiler Services**

**Tel Feltwell: 01842 850576
Mobile: 07534892411**

GOT DIRTY WINDOWS? G.COSTIN WINDOW CLEANING

Windows, doors, frames &
sills cleaned as standard.

Gutters, fascias,
conservatories & more.

Reach & Wash
Pure Water System.

Reliable & friendly service.

Other cleaning services now available.

Call Gavin 07796 606607

gcostinwindowcleaning@yahoo.co.uk

D W SAVAGE

"CARPENTER/BUILDER"

25 Years Experience

For all your building requirements

EXTENSIONS

*Kitchens, Bathrooms supplied and
Fitted or just labour
Conservatory, fascias, guttering
Laminate or Oak flooring
Patios, Decking etc.
Car Ports
All roof systems
Renovations*

Ask for Darryl

Telephone 01366 501152

Mobile 07884 373315

RAY GRIBBLE

Antique Restoration & Traditional Upholstery

All aspects of antique furniture
restoration, including French
polishing, cabinet repairs and
traditional upholstery

Traditional Upholstered Furniture

Footstools, Sofas and Chairs
made to commission

Picture Framing & Mirrors

** VISIT THE NEW WEBSITE **

www.raygribble.co.uk

Vine House, Church Road, Wereham

01366 500 387

Poppi Interiors

Fabrics, furnishings & Interiors



Made to Measure Curtains, Blinds & more
Fabrics, Wallpapers, Poles & Trimmings
Free Measure & Quote 01366 348033
poppiinteriors@aol.co.uk

CARPENTER

**For all types of
Carpentry work**

Renovations and Repairs

Cupboards and Shelves

Doors and Windows made/fitted

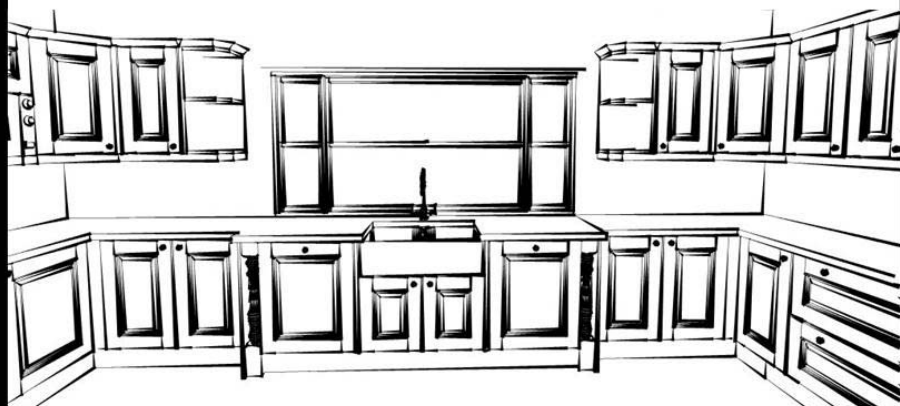
Also bespoke handmade
furniture

Call Terry Duncombe

01366 328608

For Consultation and Quote

Create your new look with newrooms.



From inspiration to installation we take care of everything
transforming your Kitchen, Bathroom, Bedroom
In to the room you always dreamt of.

For your free consultation call now on 01366 727417
Visit newroomsdesign.co.uk

or see our showroom at The Workshops, Brandon road
Methwold, Norfolk, IP26 4RH

newrooms 
discover a new level of service



newroomsdesign



newroomskitchens

Historic Property Maintenance

Repairs to Brick and Stonework - Masonry repairs - Letter cutting -
House signs - Traditional plaster - Lime mortars made for clients -
Lime washes - Conservation - Restoration - Re-pointing -
Memorials - Gravestones

Mr Jack M Rolfe
Stone Conservator

CSCS Carded
Specialist in the repair of
historic buildings & monuments

J M Rolfe
CONSERVATION

Tel: 07827608216

www.jmrolfeconservationnorfolk.co.uk

3 Malthouse Row, Wreham, Norfolk

Your Local Craftsman

EC Window & Door

C O M P A N Y

- > **Windows**
- > **Doors**
- > **Conservatories**
- > **Porches**
- > **Carports**
- > **Garage Doors**
- > **Fasica**
- > **Guttering**

27 years in the industry
Friendly family business (No pushy salesmen)
I sell it, I fit it, and I guarantee it!
All work Guaranteed & Insurance Backed Inc Deposits
Call Jason on 01362 853242 or 07718 080778
Email ecowad@hotmail.co.uk



We also repair all makes
of windows and doors !
How about replacing your
existing glass for energy A rated
Glass and start saving on
those heating bills?

certass
Quality & Evaluation for Construction
APPROVED INSTALLER

Enhance your home with Whitley & Walford
Quality Hardwood Conservatories & Orangeries



Whitley & Walford

HARDWOOD CONSERVATORIES & ORANGERIES



Create Space

Tel: 01328 700161 enquiries@whitleyandwalford.co.uk
www.whitleyandwalford.co.uk

M.B. Roofing

**Complete Re-Roof
UPVC Facias
Leadwork
Guttering
Repairs
Re-Pointing
Bird Proofing
Roof Cleaning
Chimney Rebuild
Dry Verge System**



01760 725047

07979 811260



mb-roofing.co.uk

ADE HARDY GARDENING SERVICES

For all your gardening needs

Garden Clearances

Mowing and Strimming

Hedge Cutting

Tree Work

Fencing

General Garden Maintenance

Winter tidy ups



**To discuss your requirements
please call Ade on**



**01366 328941 or
07798 785663**

**No job too large or too small to
be considered**



Garden Services John Adcock

For conifer, shrub
and hedge trimming

Garden Maintenance
and winter 'tidy ups'

Grass Cutting for large or small lawns

New fencing erected
or old fencing repaired

Mulch and Chippings available
Power Washing

Tel: 01760 337058 or 07909 785801
Fully Insured

Seb Chaplin Garden Services

All aspects of Garden and Ground
Maintenance undertaken including:

Lawn care

Tree and Shrub Pruning

Hedge Cutting

Landscaping

Ring for more details
and a free quotation

01366 727041

07733210151

emmaandseb@hotmail.co.uk



Tim's Tree Services



Pruning
Topping
Felling
Clearing

All aspects of tree and hedge
work undertaken



Over 30 years
experience



Qualified - Insured

Call 01366 347656

or 07867 764307

For your free quote

LOCAL MAN - LOCAL RATES

D.J.B. LANDSCAPING

: Driveways : Paving : Fencing :
: Garden Clearance :
: Hedge Maintenance :
: Grass Cutting / strimming :
: Building Repairs / Maintenance :
: Concreting :

All jobs considered

David Bennett

Mobile 07795 833440

Fakenham 01328 700859



NORTHWOLD ROCKERY STONE

@ BRYAN CATERS

Suppliers of Natural Stone Paving,
Circles, Setts, Rockery Stone, Cobbles,
Pebbles and much more.

Check Out Our Prices!

www.bryancater.co.uk

The Poplars, Thetford Road, Northwold, Thetford,
Norfolk IP26 5LW. Tel: 01366 728342



P.G.M.S.

**Fabrication of a
variety of metals
Mechanical engineering**

Sparex *Agricultural
spares & accessories*

Peter Garner

Mechanical Services

Shingham Lane, Beachamwell,
Swaffham, Norfolk. PE37 8AY.

Tel: 01366 328823

E-mail: pgms@lineone.net

FENLAND GARAGE DOORS

The area's most
comprehensive range of
manual and automatic doors.
Plus repairs to all doors
and spares

PROUD TO SAY MORE THAN HALF
OUR NEW CUSTOMERS COME TO
US BY RECOMMENDATION

Swaffham 01760 790 009
Bexwell Showroom 01366 382815

www.fenlandgaragedoors.co.uk

PAUL FARRAR GENERAL PLUMBING SERVICES

ALL ASPECTS OF
PLUMBING UNDERTAKEN,
INCLUDING
MAINTENANCE AND
REPAIRS

AT COMPETITIVE PRICES

**PHONE 01366 328072
OR 07725 300624**

MHS SERVICES

For all your Plumbing, Electrical
and Building maintenance work

40 years in trade
Electrical certificates supplied
to BS7671



Call Mike
Shaw on



**07776 154474 or
01760 336739**

No job too small
Free estimates



Paul Braybrooke
Oil Fired Boiler Engineer
Boiler Servicing
Breakdown Service

Commissions
Tank Replacements

Phone 01353 777788
07946 735691

Doubledays Waste Disposal

Doubledays can assist with all waste problems, from domestic septic tanks and treatment plants to commercial/industrial liquid waste, interceptors and gulleys. We also rod-out or jet blocked drains.

Portaloo and Skip Hire also available

We offer a no obligation, FREE quote for the following:-

- ♦ Installation of new septic tanks and soakaways
- ♦ Repairs to damaged drains and pipe work



Look out for our Logo *'You make it – we take it'*

Telephone: 01366 500217
01945 773757

We take most major credit and debit cards, cheques and cash

Check out our facebook page to find out more about us and any special offers in your area

CHILDREN'S PAGE

Here are some tongue-twisters for you¹

She sells seashells on the seashore.

Flash message. Flash message.

Mix a box of mixed biscuits with a boxed biscuit mixer.

A proper copper coffee pot.

I saw Esau sitting on a seesaw. Esau, he saw me.

Toy boat. Toy boat. Toy boat.

Lovely lemon liniment.

Six thick thistle sticks. Six thick thistles stick.

Good blood, bad blood.

Three free throws. The instinct of an extinct insect stinks.

Comical economists. Comical economists.

Which wristwatches are Swiss wristwatches?

Peter Piper picked a peck of pickled peppers,
A peck of pickled peppers Peter Piper picked.

If Peter Piper picked a peck of pickled peppers,
Where's the peck of pickled peppers Peter Piper picked?

One-One was a racehorse.

Two-Two was one, too.

When One-One won one race,

Two-Two won one, too.



PUZZLE PAGE

1. A thermometer is a device used to measure what?
2. Stratus, cirrus, cumulus and nimbus are types of what?
3. True or false? A rainbow is a spectrum of light that appears when the Sun shines onto water droplets in the air.
4. Earth's recent temperature rises which have been linked to human activity is known as global _____?
5. What is the name of a scientist who studies weather?
6. What is the driest desert on Earth, the Sahara, the Kalahari or the Atacama?
7. 11. True or false? The lowest recorded temperature on Earth of 89.2 °C (-128.6 ° F) was recorded at Vostok Station, Antarctica.
8. . Balls or irregular lumps of ice that fall from clouds (often during thunderstorms) are known as what?
9. An avalanche features the rapid descent of _____?
10. True of false? The most rain fall ever recorded in one year (Cherrapunji, India) is more than 30 metres.
11. What is the name of a weather instrument used to measure atmospheric pressure?
12. An anemometer is used to measure what?
13. At what temperature is Centigrade equal to Fahrenheit?
14. In terms of computing what does CPU stand for?
15. The Hubble space telescope is named after which American astronomer?
16. Firefox, Opera, Chrome, Safari and Explorer are types of what?
17. True or false? Gold is not a good conductor of electricity?
18. In terms of computing, what does ROM stand for?
19. IBM is a well known computer and information technology company, what does IBM stand for?
20. Which science fiction writer wrote the three laws of robotics?
21. True or false? In computing, keyboards are used as input devices.
22. What does the abbreviation WWW stand for?
23. Nano, Shuffle, Classic and Touch are variations of what?
24. True or false? DNA is an abbreviation for 'Deoxyribonucleic acid'

Answers on page 18



**Saint John's Way
Saint John's Business Estate
Downham Market
Norfolk
PE38 0QQ**

Easy access, ample on-site parking, dedicated sterile operating theatre, dedicated dental suite, separate dog and cat wards, isolation ward, all staff and facilities on one site, x-ray suite, in-house laboratory, ultrasound facilities, Pet Passport, export services and 24 hour nursing cover.

A Personal and Professional service that our existing clients are accustomed to. We warmly welcome new clients who wish to register with us.

As part of our aim to give something back to the community we recently purchased a full set of match shirts for the Swaffham under 9's rugby team. We hope to extend this to other age groups in the future. Now the quality of the shirts can match the quality of the rugby!

**01366 382219
www.crossingsvets.co.uk**

Our surgery times are listed below. Please note that appointments are now necessary for all evening surgeries.

Open surgeries

| | |
|-------------------------|-------------------|
| Monday to Friday | 9-10am |
| Saturday | 10-11.30am |

**All other consultations will be by appointment only
so please ring in advance**

info@crossingsvets.co.uk